

[Go to Product page](#)

Datasheet for ABIN2782753

anti-BTN2A1 antibody (N-Term)

4 Images

Overview

Quantity:	100 µL
Target:	BTN2A1
Binding Specificity:	N-Term
Reactivity:	Human, Cow, Dog, Guinea Pig, Horse, Mouse, Pig, Rabbit, Rat
Host:	Rabbit
Clonality:	Polyclonal
Conjugate:	This BTN2A1 antibody is un-conjugated
Application:	Western Blotting (WB)

Product Details

Immunogen:	The immunogen is a synthetic peptide directed towards the N terminal region of human BTN2A1
Sequence:	SVALVIHNIT AQENGTYRCY FQEGRSYDEA ILHLVVAGLG SKPLISMRGH
Predicted Reactivity:	Cow: 93%, Dog: 86%, Guinea Pig: 86%, Horse: 82%, Human: 100%, Mouse: 91%, Pig: 100%, Rabbit: 100%, Rat: 91%
Characteristics:	This is a rabbit polyclonal antibody against BTN2A1. It was validated on Western Blot using a cell lysate as a positive control.
Purification:	Affinity Purified

Target Details

Target:	BTN2A1
---------	--------

Target Details

Alternative Name:	BTN2A1 (BTN2A1 Products)
Background:	<p>The specific function of this protein remains unknown. This gene is a member of the BTN2 subfamily of genes, which encode proteins belonging to the butyrophilin protein family. The gene is located in a cluster on chromosome 6, consisting of seven genes belonging to the expanding B7/butyrophilin-like group, a subset of the immunoglobulin gene superfamily. The encoded protein is an integral plasma membrane B box protein involved in lipid, fatty-acid and sterol metabolism.</p> <p>Alias Symbols: BK14H9.1, BT2.1, BTF1, DJ3E1.1, FLJ36567</p> <p>Protein Interaction Partner: UBC,</p> <p>Protein Size: 527</p>
Molecular Weight:	57 kDa
Gene ID:	11120
NCBI Accession:	NM_007049 , NP_008980
UniProt:	Q7KYR7
Pathways:	Activated T Cell Proliferation

Application Details

Application Notes:	Optimal working dilutions should be determined experimentally by the investigator.
Comment:	Antigen size: 527 AA
Restrictions:	For Research Use only

Handling

Format:	Liquid
Concentration:	Lot specific
Buffer:	Liquid. Purified antibody supplied in 1x PBS buffer with 0.09 % (w/v) sodium azide and 2 % sucrose.
Preservative:	Sodium azide
Precaution of Use:	This product contains Sodium azide: a POISONOUS AND HAZARDOUS SUBSTANCE which should be handled by trained staff only.
Handling Advice:	Avoid repeated freeze-thaw cycles.

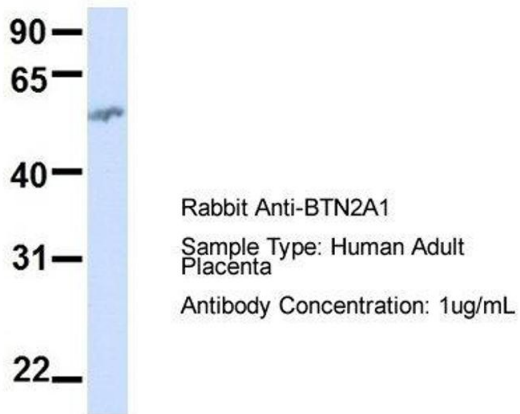
Handling

Storage: -20 °C

Storage Comment: For short term use, store at 2-8°C up to 1 week. For long term storage, store at -20°C in small aliquots to prevent freeze-thaw cycles.

Images

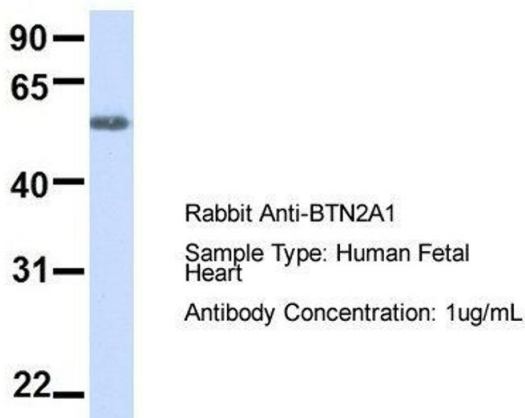
BTN2A1



Western Blotting

Image 1. Host: Rabbit Target Name: BTN2A1 Sample Type: Human Adult Placenta Antibody Dilution: 1.0ug/ml

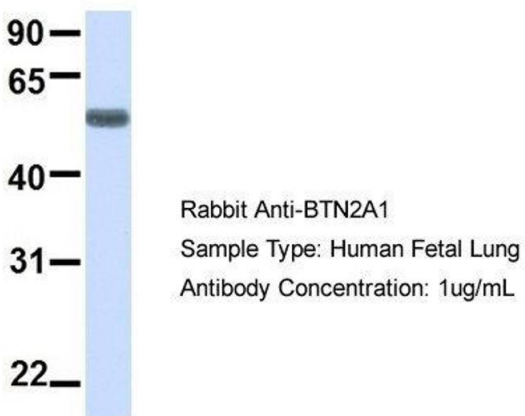
BTN2A1



Western Blotting

Image 2. Host: Rabbit Target Name: BTN2A1 Sample Type: Human Fetal Heart Antibody Dilution: 1.0ug/ml

BTN2A1



Western Blotting

Image 3. Host: Rabbit Target Name: BTN2A1 Sample Type: Human Fetal Lung Antibody Dilution: 1.0ug/ml

Please check the [product details page](#) for more images. Overall 4 images are available for ABIN2782753.