

Datasheet for ABIN2782757
anti-FICD antibody (C-Term)[Go to Product page](#)

3 Images

Overview

Quantity:	100 µL
Target:	FICD
Binding Specificity:	C-Term
Reactivity:	Human, Mouse, Rat, Dog, Cow, Horse, Pig, Guinea Pig
Host:	Rabbit
Clonality:	Polyclonal
Conjugate:	This FICD antibody is un-conjugated
Application:	Western Blotting (WB), Immunohistochemistry (IHC)

Product Details

Immunogen:	The immunogen is a synthetic peptide directed towards the C terminal region of human FICD
Sequence:	GDVRPFIRFI AKCTETTLDT LLFATTEYSV ALPEAQP NHS GFKETLPVKP
Predicted Reactivity:	Cow: 100%, Dog: 100%, Guinea Pig: 92%, Horse: 100%, Human: 100%, Mouse: 100%, Pig: 100%, Rat: 100%
Characteristics:	This is a rabbit polyclonal antibody against FICD. It was validated on Western Blot and immunohistochemistry.
Purification:	Affinity Purified

Target Details

Target:	FICD
---------	------

Target Details

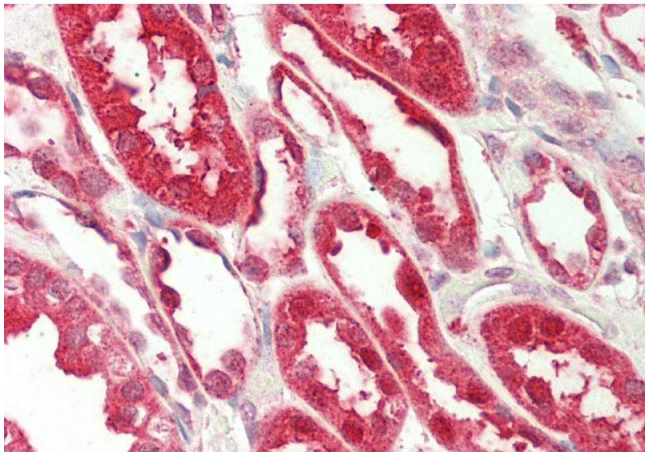
Alternative Name:	FICD (FICD Products)
Background:	The function remains known. Alias Symbols: HYPE, MGC5623, UNQ3041, hip13, HIP13 Protein Interaction Partner: ADK, HTT, Protein Size: 458
Molecular Weight:	52 kDa
Gene ID:	11153
NCBI Accession:	NM_007076 , NP_009007
UniProt:	Q9BVA6

Application Details

Application Notes:	Optimal working dilutions should be determined experimentally by the investigator.
Comment:	Antigen size: 458 AA
Restrictions:	For Research Use only

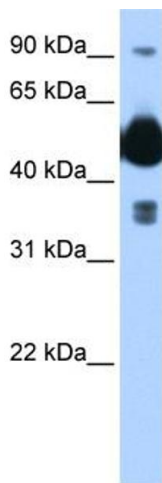
Handling

Format:	Liquid
Concentration:	Lot specific
Buffer:	Liquid. Purified antibody supplied in 1x PBS buffer with 0.09 % (w/v) sodium azide and 2 % sucrose.
Preservative:	Sodium azide
Precaution of Use:	This product contains Sodium azide: a POISONOUS AND HAZARDOUS SUBSTANCE which should be handled by trained staff only.
Handling Advice:	Avoid repeated freeze-thaw cycles.
Storage:	-20 °C
Storage Comment:	For short term use, store at 2-8°C up to 1 week. For long term storage, store at -20°C in small aliquots to prevent freeze-thaw cycles.



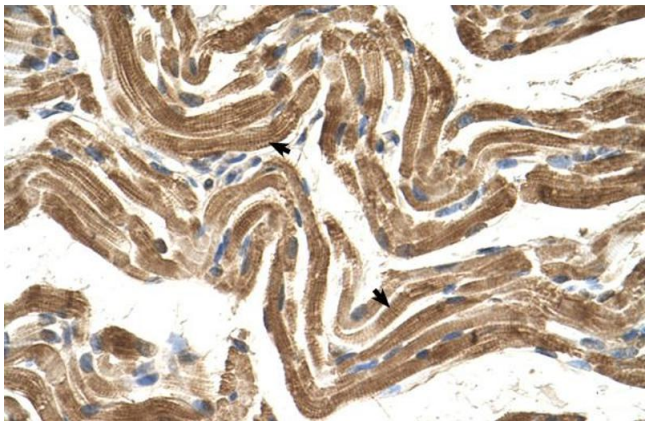
Immunohistochemistry

Image 1. Rabbit Anti-FICD antibody Catalog Number: ARP46826 Formalin Fixed Paraffin Embedded Tissue: Human Kidney Primary antibody Concentration: 1:200 Secondary Antibody: Donkey anti-Rabbit-Cy3 Secondary Antibody Concentration: 1:200 Magnification: 20x Exposure Time: 0.5-2.0sec



Western Blotting

Image 2. WB Suggested Anti-FICD Antibody Titration: 0.2-1 ug/ml Positive Control: Transfected 293T



Immunohistochemistry

Image 3. Human Muscle