

Datasheet for ABIN2782764
anti-ATP1B4 antibody (Middle Region)[Go to Product page](#)

1 Image

Overview

Quantity:	100 µL
Target:	ATP1B4
Binding Specificity:	Middle Region
Reactivity:	Rat, Human, Mouse, Cow, Rabbit, Dog, Guinea Pig, Horse
Host:	Rabbit
Clonality:	Polyclonal
Conjugate:	This ATP1B4 antibody is un-conjugated
Application:	Western Blotting (WB)

Product Details

Immunogen:	The immunogen is a synthetic peptide directed towards the middle region of human ATP1B4
Sequence:	ACQFKRSFLK NCSGLEDPTF GYSTGQPCIL LKMNRIVGFR PELGDPVKVS
Predicted Reactivity:	Cow: 100%, Dog: 100%, Guinea Pig: 100%, Horse: 100%, Human: 100%, Mouse: 100%, Rabbit: 100%, Rat: 100%
Characteristics:	This is a rabbit polyclonal antibody against ATP1B4. It was validated on Western Blot using a cell lysate as a positive control.
Purification:	Affinity Purified

Target Details

Target:	ATP1B4
---------	--------

Target Details

Alternative Name:	ATP1B4 (ATP1B4 Products)
Background:	<p>This gene has been found in all vertebrate genomes sequenced to date. However, this gene has undergone a change in function in placental mammals compared to other species. Specifically, in fish, avian, and amphibian species, this gene encodes plasma membrane-bound beta-subunits of Na,K-ATPase. In placental mammals, the encoded protein interacts with the nuclear transcriptional coregulator SKIP and may be involved in the regulation of TGF-beta signaling.</p> <p>Two transcript variants encoding different isoforms have been found for this gene.</p> <p>Alias Symbols: -</p> <p>Protein Size: 353</p>
Molecular Weight:	41 kDa
Gene ID:	23439
NCBI Accession:	NM_012069 , NP_036201
UniProt:	Q9UN42
Pathways:	Thyroid Hormone Synthesis , Proton Transport

Application Details

Application Notes:	Optimal working dilutions should be determined experimentally by the investigator.
Comment:	Antigen size: 353 AA
Restrictions:	For Research Use only

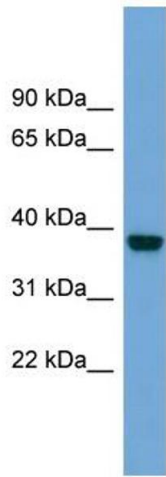
Handling

Format:	Liquid
Concentration:	Lot specific
Buffer:	Liquid. Purified antibody supplied in 1x PBS buffer with 0.09 % (w/v) sodium azide and 2 % sucrose.
Preservative:	Sodium azide
Precaution of Use:	This product contains Sodium azide: a POISONOUS AND HAZARDOUS SUBSTANCE which should be handled by trained staff only.
Handling Advice:	Avoid repeated freeze-thaw cycles.
Storage:	-20 °C

Handling

Storage Comment: For short term use, store at 2-8°C up to 1 week. For long term storage, store at -20°C in small aliquots to prevent freeze-thaw cycles.

Images



Western Blotting

Image 1. WB Suggested Anti-ATP1B4 Antibody Titration:
0.2-1 ug/ml Positive Control: COL0205 cell lysate