



[Go to Product page](#)

Datasheet for ABIN2782766  
**anti-BACE1 antibody (N-Term)**

6 Images

Overview

Quantity:	100 µL
Target:	BACE1
Binding Specificity:	N-Term
Reactivity:	Human, Mouse, Rat, Cow, Dog, Guinea Pig, Horse, Rabbit, Zebrafish (Danio rerio)
Host:	Rabbit
Clonality:	Polyclonal
Conjugate:	This BACE1 antibody is un-conjugated
Application:	Western Blotting (WB), Immunohistochemistry (IHC), Immunofluorescence (IF)

Product Details

Immunogen:	The immunogen is a synthetic peptide directed towards the N terminal region of human BACE1
Sequence:	GQGYVEMTV GSPQQLNIL VDTGSSNFAV GAAPHPFLHR YYQRQLSSTY
Predicted Reactivity:	Cow: 100%, Dog: 100%, Guinea Pig: 100%, Horse: 100%, Human: 100%, Mouse: 100%, Rabbit: 100%, Rat: 100%, Zebrafish: 91%
Characteristics:	This is a rabbit polyclonal antibody against BACE1. It was validated on Western Blot using a cell lysate as a positive control.
Purification:	Affinity Purified

Target Details

Target:	BACE1
---------	-------

## Target Details

---

Alternative Name: BACE1 ([BACE1 Products](#))

---

Background: Cerebral deposition of amyloid beta peptide is an early and critical feature of Alzheimer's disease. Amyloid beta peptide is generated by proteolytic cleavage of amyloid precursor protein (APP) by two proteases, one of which is the protein. BACE1, a member of the peptidase A1 protein family, is a type I integral membrane glycoprotein and aspartic protease that is found mainly in the Golgi. Cerebral deposition of amyloid beta peptide is an early and critical feature of Alzheimer's disease. Amyloid beta peptide is generated by proteolytic cleavage of amyloid precursor protein (APP) by two proteases, one of which is the protein encoded by this gene. The encoded protein, a member of the peptidase A1 protein family, is a type I integral membrane glycoprotein and aspartic protease that is found mainly in the Golgi. Four transcript variants encoding different isoforms have been described for this gene.

Alias Symbols: ASP2, BACE, FLJ90568, HSPC104, KIAA1149

Protein Interaction Partner: COPS5, BRI3, RANBP9, APP, PCSK9, GGA1, GGA3, GGA2, UBC, FBXO2, CMPK1, ITM2C, KHSRP, PLSCR1, NCSTN, PDIA3, CSNK1D, SELPLG, ATP1B1, PSAP, FURIN, MMP2, LRP1, PSEN1,

Protein Size: 501

---

Molecular Weight: 51 kDa

---

Gene ID: 23621

---

NCBI Accession: [NM\\_012104](#), [NP\\_036236](#)

---

UniProt: [P56817](#)

---

## Application Details

---

Application Notes: Optimal working dilutions should be determined experimentally by the investigator.

---

Comment: Antigen size: 501 AA

---

Restrictions: For Research Use only

---

## Handling

---

Format: Liquid

---

Concentration: Lot specific

---

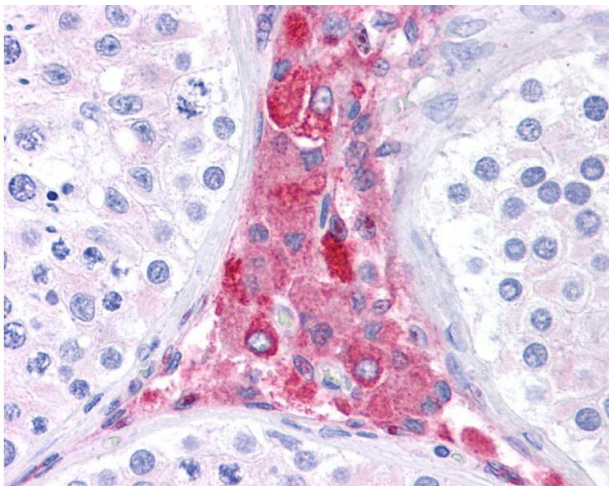
Buffer: Liquid. Purified antibody supplied in 1x PBS buffer with 0.09 % (w/v) sodium azide and 2 % sucrose.

---

## Handling

Preservative:	Sodium azide
Precaution of Use:	This product contains Sodium azide: a POISONOUS AND HAZARDOUS SUBSTANCE which should be handled by trained staff only.
Handling Advice:	Avoid repeated freeze-thaw cycles.
Storage:	-20 °C
Storage Comment:	For short term use, store at 2-8°C up to 1 week. For long term storage, store at -20°C in small aliquots to prevent freeze-thaw cycles.

## Images



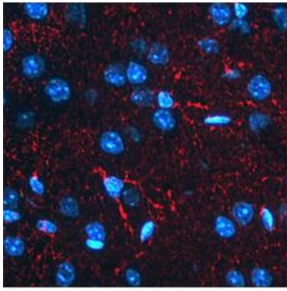
### Immunohistochemistry

**Image 1.** Anti-BACE1 antibody IHC of human testis. Immunohistochemistry of formalin-fixed, paraffin-embedded tissue after heat-induced antigen retrieval. Antibody concentration 5 ug/ml.



### Western Blotting

**Image 2.** WB Suggested Anti-BACE1 Antibody Titration: 0.2-1 ug/ml ELISA Titer: 1:62500 Positive Control: Human Liver



**BACE1 (ARP46851\_P050)**

Immunofluorescent BACE1 detection in mouse astrocytes (red fluorescence). Nuclei were stained with DAPI (blue fluorescence).

Recommended for IHC on rat and mouse tissue. Working dilution 2-10 ug/mL

**Image 3.**

Please check the [product details page](#) for more images. Overall 6 images are available for ABIN2782766.