

Datasheet for ABIN2782767
anti-BACE2 antibody (Middle Region)[Go to Product page](#)**2** Images

Overview

Quantity:	100 µL
Target:	BACE2
Binding Specificity:	Middle Region
Reactivity:	Human, Rat, Mouse, Guinea Pig, Cow, Dog, Horse, Rabbit, Zebrafish (Danio rerio)
Host:	Rabbit
Clonality:	Polyclonal
Conjugate:	This BACE2 antibody is un-conjugated
Application:	Western Blotting (WB)

Product Details

Immunogen:	The immunogen is a synthetic peptide directed towards the middle region of human BACE2
Sequence:	SLNLDCREYN ADKAIVDSGT TLLRLPQKVF DAVVEAVARA SLIPEFSDGF
Predicted Reactivity:	Cow: 100%, Dog: 100%, Guinea Pig: 100%, Horse: 100%, Human: 100%, Mouse: 100%, Rabbit: 85%, Rat: 100%, Zebrafish: 92%
Characteristics:	This is a rabbit polyclonal antibody against BACE2. It was validated on Western Blot using a cell lysate as a positive control.
Purification:	Affinity Purified

Target Details

Target:	BACE2
---------	-------

Target Details

Alternative Name:	BACE2 (BACE2 Products)
Background:	<p>Cerebral deposition of amyloid beta peptide is an early and critical feature of Alzheimer's disease and a frequent complication of Down syndrome. Amyloid beta peptide is generated by proteolytic cleavage of amyloid precursor protein by 2 proteases, one of which is the protein encoded by this gene. This gene localizes to the 'Down critical region' of chromosome 21. The encoded protein, a member of the peptidase A1 protein family, is a type I integral membrane glycoprotein and aspartic protease. Three transcript variants encoding different isoforms have been described for this gene.</p> <p>Alias Symbols: AEPLC, ALP56, ASP1, ASP21, BAE2, CDA13, CEAP1, DRAP</p> <p>Protein Interaction Partner: UBC, BACE2, APP, GGA1, GGA2,</p> <p>Protein Size: 396</p>
Molecular Weight:	37 kDa
Gene ID:	25825
NCBI Accession:	NM_138992 , NP_620477
UniProt:	Q9Y5Z0

Application Details

Application Notes:	Optimal working dilutions should be determined experimentally by the investigator.
Comment:	Antigen size: 396 AA
Restrictions:	For Research Use only

Handling

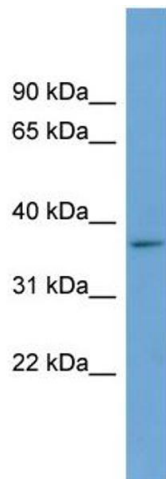
Format:	Liquid
Concentration:	Lot specific
Buffer:	Liquid. Purified antibody supplied in 1x PBS buffer with 0.09 % (w/v) sodium azide and 2 % sucrose.
Preservative:	Sodium azide
Precaution of Use:	This product contains Sodium azide: a POISONOUS AND HAZARDOUS SUBSTANCE which should be handled by trained staff only.
Handling Advice:	Avoid repeated freeze-thaw cycles.

Handling

Storage: -20 °C

Storage Comment: For short term use, store at 2-8°C up to 1 week. For long term storage, store at -20°C in small aliquots to prevent freeze-thaw cycles.

Images



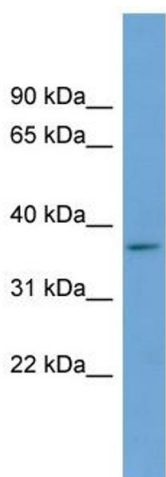
Western Blotting

Image 1. WB Suggested Anti-BACE2

Antibody Titration: 0.2-1 µg/mL ELISA Titer: 1:2500

Positive Control: ACHN cell lysate

BACE2 is supported by BioGPS gene expression data to be expressed in ACHN



Western Blotting

Image 2. WB Suggested Anti-BACE2 Antibody Titration: 0.2-1 ug/ml ELISA Titer: 1:62500 Positive Control: ACHN cell lysate BACE2 is supported by BioGPS gene expression data to be expressed in ACHN