

Datasheet for ABIN2782770
anti-CHIC2 antibody (N-Term)

3 Images

[Go to Product page](#)

Overview

Quantity:	100 µL
Target:	CHIC2
Binding Specificity:	N-Term
Reactivity:	Human, Mouse, Rat, Cow, Guinea Pig, Horse, Dog, Zebrafish (Danio rerio), Rabbit
Host:	Rabbit
Clonality:	Polyclonal
Conjugate:	This CHIC2 antibody is un-conjugated
Application:	Western Blotting (WB), Immunohistochemistry (IHC)

Product Details

Immunogen:	The immunogen is a synthetic peptide directed towards the N terminal region of human CHIC2
Sequence:	EEQLLKYSPP PVVVRGSGHV TVFGLSNKFE SEFPSSLTGK VAPEEFKASI
Predicted Reactivity:	Cow: 100%, Dog: 100%, Guinea Pig: 100%, Horse: 100%, Human: 100%, Mouse: 100%, Rabbit: 100%, Rat: 100%, Zebrafish: 93%
Characteristics:	This is a rabbit polyclonal antibody against CHIC2. It was validated on Western Blot and immunohistochemistry.
Purification:	Affinity Purified

Target Details

Target:	CHIC2
---------	-------

Target Details

Alternative Name:	CHIC2 (CHIC2 Products)
Background:	<p>CHIC2 is a member of the CHIC family of proteins. This protein contains a cysteine-rich hydrophobic (CHIC) motif, and is localized to vesicular structures and the plasma membrane. CHIC2 gene is associated with some cases of acute myeloid leukemia. This gene encodes a member of the CHIC family of proteins. The encoded protein contains a cysteine-rich hydrophobic (CHIC) motif, and is localized to vesicular structures and the plasma membrane. This gene is associated with some cases of acute myeloid leukemia.</p> <p>Alias Symbols: BTL, MGC21173</p> <p>Protein Interaction Partner: NOTCH2NL, KRTAP10-3, KRTAP10-8, KRTAP10-1, KRTAP10-9, KRTAP10-7, SPERT, KRT40, KRTAP4-2, CEP44, GMCL1, PNMA1, UBC, TCF4, MEOX2, KRTAP5-9, CDR2, PLEKHF2, TUBGCP4, ITS2, ELAVL1, KRTAP4-12, CATSPER1, OTX1, MDFI, TOP3B, U2AF2, HOXA1,</p> <p>Protein Size: 165</p>
Molecular Weight:	19 kDa
Gene ID:	26511
NCBI Accession:	NM_012110 , NP_036242
UniProt:	Q9UKJ5

Application Details

Application Notes:	Optimal working dilutions should be determined experimentally by the investigator.
Comment:	Antigen size: 165 AA
Restrictions:	For Research Use only

Handling

Format:	Liquid
Concentration:	Lot specific
Buffer:	Liquid. Purified antibody supplied in 1x PBS buffer with 0.09 % (w/v) sodium azide and 2 % sucrose.
Preservative:	Sodium azide
Precaution of Use:	This product contains Sodium azide: a POISONOUS AND HAZARDOUS SUBSTANCE which should be handled by trained staff only.

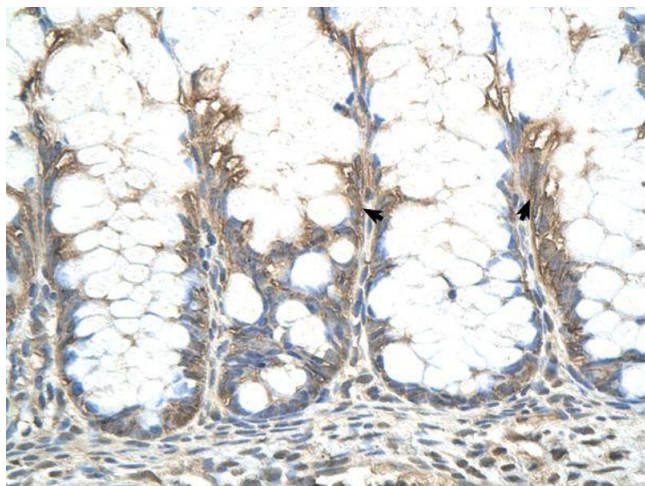
Handling

Handling Advice: Avoid repeated freeze-thaw cycles.

Storage: -20 °C

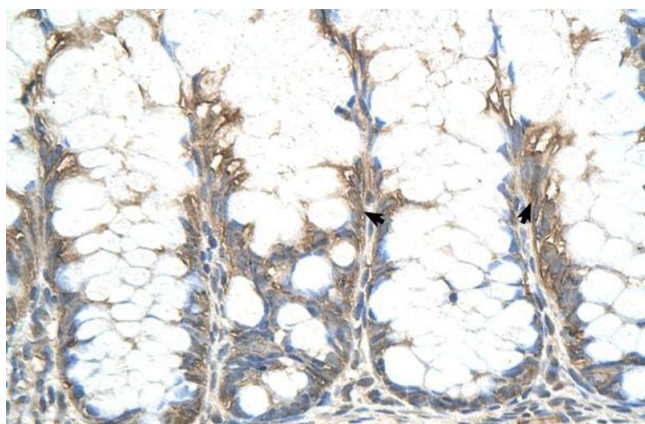
Storage Comment: For short term use, store at 2-8°C up to 1 week. For long term storage, store at -20°C in small aliquots to prevent freeze-thaw cycles.

Images



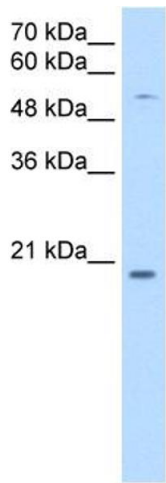
Immunohistochemistry

Image 1.



Immunohistochemistry

Image 2. Human Intestine



Western Blotting

Image 3. WB Suggested Anti-CHIC2 Antibody Titration:
0.25ug/ml Positive Control: HepG2 cell lysate