



[Go to Product page](#)

Datasheet for ABIN2782772

anti-FKBP8 antibody (N-Term)

2 Images

Overview

Quantity:	100 µL
Target:	FKBP8
Binding Specificity:	N-Term
Reactivity:	Human, Mouse, Rat, Dog, Cow, Horse, Guinea Pig, Goat
Host:	Rabbit
Clonality:	Polyclonal
Conjugate:	This FKBP8 antibody is un-conjugated
Application:	Western Blotting (WB), Immunohistochemistry (IHC)

Product Details

Immunogen:	The immunogen is a synthetic peptide directed towards the N terminal region of human FKBP8
Sequence:	GPPGSSRPVK GQWTVHLQT SLENGTRVQE EPELVFTLGD CDVIQALDLS
Predicted Reactivity:	Cow: 93%, Dog: 100%, Goat: 100%, Guinea Pig: 100%, Horse: 100%, Human: 100%, Mouse: 100%, Rat: 100%
Characteristics:	This is a rabbit polyclonal antibody against FKBP8. It was validated on Western Blot using a cell lysate as a positive control.
Purification:	Affinity Purified

Target Details

Target:	FKBP8
---------	-------

Target Details

Alternative Name: [FKBP8 \(FKBP8 Products\)](#)

Background: FKBP8 is a member of the immunophilin protein family, which play a role in immunoregulation and basic cellular processes involving protein folding and trafficking. Unlike the other members of the family, it does not seem to have PPlase/rotamase activity. It may have a role in neurons associated with memory function. The protein encoded by this gene is a member of the immunophilin protein family, which play a role in immunoregulation and basic cellular processes involving protein folding and trafficking. Unlike the other members of the family, this encoded protein does not seem to have PPlase/rotamase activity. It may have a role in neurons associated with memory function. Publication Note: This RefSeq record includes a subset of the publications that are available for this gene. Please see the Entrez Gene record to access additional publications.

Alias Symbols: FKBP38, FKBP38

Protein Interaction Partner: UBC, RHEB, RICTOR, MLST8, RPTOR, MTOR, PDCL, CACYBP, HSPBP1, SUGT1, PTGES3, HCVgp1, CDK20, ADRB2, CLN3, ARHGEF5, HSP90AA1, CAMK2A, BNIPL, CALM1, BCL2, FKBP8, KCNH2, MRPL11, TOMM22, MRPL15, NNT, PGRMC1, YME1L1, UQCRFS1, UQCRC2, UQCRC1, SURF1, SSR1, DHODH,

Protein Size: 413

Molecular Weight: 45 kDa

Gene ID: 23770

NCBI Accession: [NM_012181](#), [NP_036313](#)

UniProt: [Q14318](#)

Pathways: [Autophagy](#)

Application Details

Application Notes: Optimal working dilutions should be determined experimentally by the investigator.

Comment: Antigen size: 413 AA

Restrictions: For Research Use only

Handling

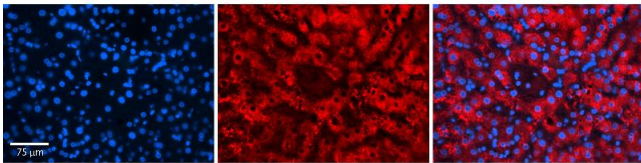
Format: Liquid

Concentration: Lot specific

Handling

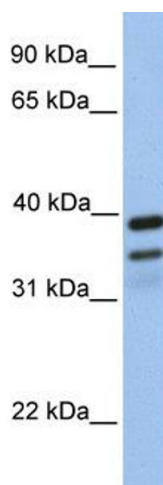
Buffer:	Liquid. Purified antibody supplied in 1x PBS buffer with 0.09 % (w/v) sodium azide and 2 % sucrose.
Preservative:	Sodium azide
Precaution of Use:	This product contains Sodium azide: a POISONOUS AND HAZARDOUS SUBSTANCE which should be handled by trained staff only.
Handling Advice:	Avoid repeated freeze-thaw cycles.
Storage:	-20 °C
Storage Comment:	For short term use, store at 2-8°C up to 1 week. For long term storage, store at -20°C in small aliquots to prevent freeze-thaw cycles.

Images



Immunohistochemistry

Image 1. Rabbit Anti-FKBP8 Antibody Catalog Number: ARP46862_P050 Formalin Fixed Paraffin Embedded Tissue: Human Liver Tissue Observed Staining: Cytoplasm in hepatocytes Primary Antibody Concentration: 1:100 Other Working Concentrations: N/A Secondary Antibody: Donkey anti-Rabbit-Cy3 Secondary Antibody Concentration: 1:200 Magnification: 20X Exposure Time: 0.5 - 2.0 sec



Western Blotting

Image 2. WB Suggested Anti-FKBP8 Antibody Titration: 0.2-1 ug/ml Positive Control: Human brain