



[Go to Product page](#)

Datasheet for ABIN2782776

anti-LAMP5 antibody (Middle Region)

2 Images

Overview

Quantity:	100 µL
Target:	LAMP5
Binding Specificity:	Middle Region
Reactivity:	Human, Mouse, Rat, Cow, Dog, Guinea Pig, Horse, Rabbit, Zebrafish (Danio rerio)
Host:	Rabbit
Clonality:	Polyclonal
Conjugate:	This LAMP5 antibody is un-conjugated
Application:	Western Blotting (WB)

Product Details

Immunogen:	The immunogen is a synthetic peptide directed towards the middle region of human C20orf103
Sequence:	CQAQQTISLA SSDPQKTVTM ILSAVHIQPF DIISDFVFSE EHKCPVDERE
Predicted Reactivity:	Cow: 100%, Dog: 100%, Guinea Pig: 100%, Horse: 100%, Human: 100%, Mouse: 100%, Rabbit: 93%, Rat: 100%, Zebrafish: 82%
Characteristics:	This is a rabbit polyclonal antibody against C20orf103. It was validated on Western Blot using a cell lysate as a positive control.
Purification:	Affinity Purified

Target Details

Target:	LAMP5
---------	-------

Target Details

Alternative Name:	C20orf103 (LAMP5 Products)
Background:	The exact function of C20orf103 remains unknown. Alias Symbols: LAMP-5, UNC-43, BAD-LAMP, C20orf103 Protein Size: 280
Molecular Weight:	28 kDa
Gene ID:	24141
NCBI Accession:	NM_012261 , NP_036393
UniProt:	Q9UJQ1

Application Details

Application Notes:	Optimal working dilutions should be determined experimentally by the investigator.
Comment:	Antigen size: 280 AA
Restrictions:	For Research Use only

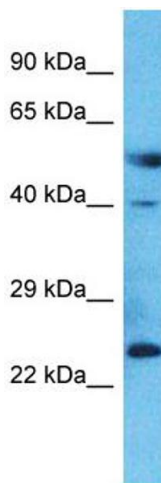
Handling

Format:	Liquid
Concentration:	Lot specific
Buffer:	Liquid. Purified antibody supplied in 1x PBS buffer with 0.09 % (w/v) sodium azide and 2 % sucrose.
Preservative:	Sodium azide
Precaution of Use:	This product contains Sodium azide: a POISONOUS AND HAZARDOUS SUBSTANCE which should be handled by trained staff only.
Handling Advice:	Avoid repeated freeze-thaw cycles.
Storage:	-20 °C
Storage Comment:	For short term use, store at 2-8°C up to 1 week. For long term storage, store at -20°C in small aliquots to prevent freeze-thaw cycles.



Western Blotting

Image 1. WB Suggested Anti-C20orf103 Antibody Titration: 0.2-1 ug/ml ELISA Titer: 1:312500 Positive Control: 721_B cell lysate



Western Blotting

Image 2. Host: Rabbit Target Name: LAMP5 Sample Type: Placenta lysates Antibody Dilution: 1.0ug/ml