



[Go to Product page](#)

Datasheet for ABIN2782785  
**anti-NNT antibody (N-Term)**

3 Images

1 Publication

### Overview

Quantity:	100 µL
Target:	NNT
Binding Specificity:	N-Term
Reactivity:	Human, Mouse, Rat, Dog, Cow, Zebrafish (Danio rerio), Rabbit, Guinea Pig, Horse
Host:	Rabbit
Clonality:	Polyclonal
Conjugate:	This NNT antibody is un-conjugated
Application:	Western Blotting (WB)

### Product Details

Immunogen:	The immunogen is a synthetic peptide directed towards the N terminal region of human NNT
Sequence:	IVRGFDTRAA ALEQFKSLGA EPLEVDLKES GEGQGGYAKE MSKEFIEAEM
Predicted Reactivity:	Cow: 100%, Dog: 100%, Guinea Pig: 100%, Horse: 100%, Human: 100%, Mouse: 100%, Rabbit: 100%, Rat: 100%, Zebrafish: 93%
Characteristics:	This is a rabbit polyclonal antibody against NNT. It was validated on Western Blot using a cell lysate as a positive control.
Purification:	Affinity Purified

### Target Details

Target:	NNT
---------	-----

## Target Details

---

Alternative Name: [NNT \(NNT Products\)](#)

---

Background: NNT is an integral protein of the inner mitochondrial membrane. The enzyme couples hydride transfer between NAD(H) and NADP(+) to proton translocation across the inner mitochondrial membrane. Under most physiological conditions, the enzyme uses energy from the mitochondrial proton gradient to produce high concentrations of NADPH. The resulting NADPH is used for biosynthesis and in free radical detoxification. This gene encodes an integral protein of the inner mitochondrial membrane. The enzyme couples hydride transfer between NAD(H) and NADP(+) to proton translocation across the inner mitochondrial membrane. Under most physiological conditions, the enzyme uses energy from the mitochondrial proton gradient to produce high concentrations of NADPH. The resulting NADPH is used for biosynthesis and in free radical detoxification. Two alternatively spliced variants, encoding the same protein, have been found for this gene.

Alias Symbols: MGC126502, MGC126503

Protein Interaction Partner: MVP, UBC, TIMM10, PTC1, FKBP8, POFUT1, UQCR11, ATP6V1F, PRPF3, LAMTOR3, SF1, THY1, ABCD3, NDUFS6, NDUFA9, SLC26A2, ATP5B, SLC25A6, SIRT7, MME, HNRNPA1,

Protein Size: 1086

---

Molecular Weight: 114 kDa

---

Gene ID: 23530

---

NCBI Accession: [NM\\_012343](#), [NP\\_036475](#)

---

UniProt: [Q13423](#)

---

Pathways: [Proton Transport](#)

---

## Application Details

---

Application Notes: Optimal working dilutions should be determined experimentally by the investigator.

---

Comment: Antigen size: 1086 AA

---

Restrictions: For Research Use only

---

## Handling

---

Format: Liquid

---

Concentration: Lot specific

---

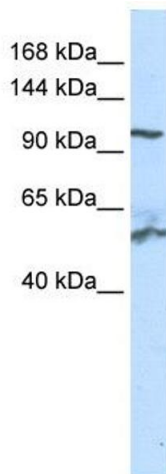
## Handling

Buffer:	Liquid. Purified antibody supplied in 1x PBS buffer with 0.09 % (w/v) sodium azide and 2 % sucrose.
Preservative:	Sodium azide
Precaution of Use:	This product contains Sodium azide: a POISONOUS AND HAZARDOUS SUBSTANCE which should be handled by trained staff only.
Handling Advice:	Avoid repeated freeze-thaw cycles.
Storage:	-20 °C
Storage Comment:	For short term use, store at 2-8°C up to 1 week. For long term storage, store at -20°C in small aliquots to prevent freeze-thaw cycles.

## Publications

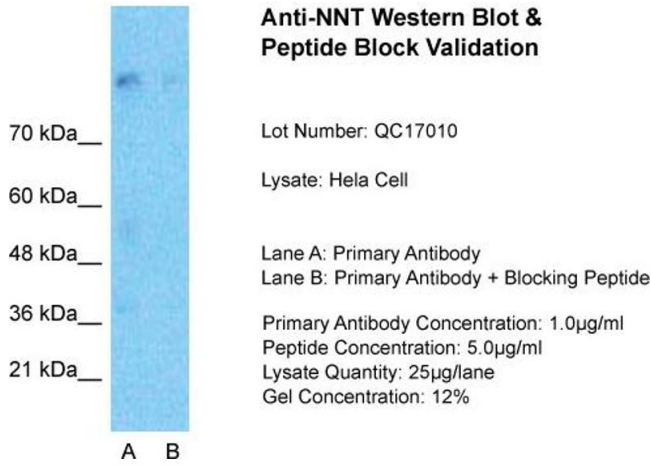
Product cited in: Mehrle, Rosenfelder, Schupp, del Val, Arlt, Hahne, Bechtel, Simpson, Hofmann, Hide, Glatting, Huber, Pepperkok, Poustka, Wiemann: "The LIFEdb database in 2006." in: **Nucleic acids research**, Vol. 34, Issue Database issue, pp. D415-8, (2005) ([PubMed](#)).

## Images



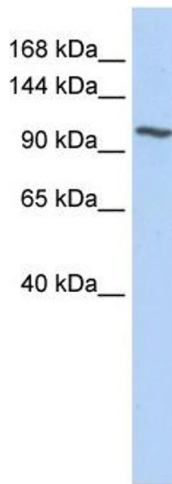
### Western Blotting

**Image 1. WB Suggested Anti-NNT Antibody Titration:** 0.2-1 ug/ml  
**ELISA Titer:** 1:12500  
**Positive Control:** Human Liver



**Western Blotting**

**Image 2.** Host: Rabbit Target Name: NNT Sample Type: Hela Whole cell Lane A: Primary Antibody Lane B: Primary Antibody + Blocking Peptide Primary Antibody Concentration: 1ug/ml Peptide Concentration: 5ug/ml Lysate Quantity: 25ug/lane/Lane Gel Concentration: 0.12



**Western Blotting**

**Image 3.** WB Suggested Anti-NNT Antibody Titration: 0.2-1 ug/ml ELISA Titer: 1:12500 Positive Control: Human Liver