

Datasheet for ABIN2782786  
**anti-NPTN antibody (Middle Region)**



[Go to Product page](#)

1 Image

## Overview

Quantity:	100 µL
Target:	NPTN
Binding Specificity:	Middle Region
Reactivity:	Human, Mouse, Rat, Dog, Rabbit, Cow, Guinea Pig, Horse, Zebrafish (Danio rerio)
Host:	Rabbit
Clonality:	Polyclonal
Conjugate:	This NPTN antibody is un-conjugated
Application:	Western Blotting (WB)

## Product Details

Immunogen:	The immunogen is a synthetic peptide directed towards the middle region of human NPTN
Sequence:	SAPKANATIE VKAAPDITGH KRSENKNEGQ DATMYCKSVG YPHPDWIWRK
Predicted Reactivity:	Cow: 100%, Dog: 100%, Guinea Pig: 100%, Horse: 100%, Human: 100%, Mouse: 100%, Rabbit: 100%, Rat: 100%, Zebrafish: 82%
Characteristics:	This is a rabbit polyclonal antibody against NPTN. It was validated on Western Blot using a cell lysate as a positive control.
Purification:	Affinity Purified

## Target Details

Target:	NPTN
---------	------

## Target Details

Alternative Name:	NPTN ( <a href="#">NPTN Products</a> )
Background:	<p>Neuroplastin is a type I transmembrane protein belonging to the Ig superfamily. The protein is believed to be involved in cell-cell interactions or cell-substrate interactions. The alpha and beta transcripts show differential localization within the brain.</p> <p>Neuroplastin is a type I transmembrane protein belonging to the Ig superfamily. The protein is believed to be involved in cell-cell interactions or cell-substrate interactions. The alpha and beta transcripts show differential localization within the brain.</p> <p>Alias Symbols: DKFZp686L2477, GP55, GP65, MGC102805, SDFR1, SDR1, np55, np65</p> <p>Protein Interaction Partner: UBC, Htt, VMA21, NIT2, UBXN1, NDUFV2, SLC25A5, FBXO6, SURF2,</p> <p>Protein Size: 282</p>
Molecular Weight:	29 kDa
Gene ID:	27020
NCBI Accession:	<a href="#">NM_017455</a> , <a href="#">NP_059429</a>
UniProt:	<a href="#">Q9Y639</a>
Pathways:	<a href="#">Regulation of long-term Neuronal Synaptic Plasticity</a>

## Application Details

Application Notes:	Optimal working dilutions should be determined experimentally by the investigator.
Comment:	Antigen size: 282 AA
Restrictions:	For Research Use only

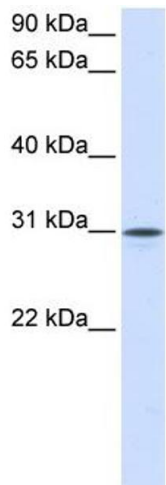
## Handling

Format:	Liquid
Concentration:	Lot specific
Buffer:	Liquid. Purified antibody supplied in 1x PBS buffer with 0.09 % (w/v) sodium azide and 2 % sucrose.
Preservative:	Sodium azide
Precaution of Use:	This product contains Sodium azide: a POISONOUS AND HAZARDOUS SUBSTANCE which should be handled by trained staff only.
Handling Advice:	Avoid repeated freeze-thaw cycles.

Handling

Storage:	-20 °C
Storage Comment:	For short term use, store at 2-8°C up to 1 week. For long term storage, store at -20°C in small aliquots to prevent freeze-thaw cycles.

Images



**Western Blotting**

**Image 1.** WB Suggested Anti-NPTN Antibody Titration: 0.2-1 ug/ml ELISA Titer: 1:1562500 Positive Control: Human Muscle