



[Go to Product page](#)

Datasheet for ABIN2782792

## anti-POMT2 antibody (Middle Region)

### 1 Image

#### Overview

Quantity:	100 µL
Target:	POMT2
Binding Specificity:	Middle Region
Reactivity:	Human, Mouse, Rat, Rabbit, Dog, Zebrafish (Danio rerio), Guinea Pig, Horse, Cow, Saccharomyces cerevisiae
Host:	Rabbit
Clonality:	Polyclonal
Conjugate:	This POMT2 antibody is un-conjugated
Application:	Western Blotting (WB)

#### Product Details

Immunogen:	The immunogen is a synthetic peptide directed towards the middle region of human POMT2
Sequence:	AIGYLHSHRH LYPEGIGARQ QQVTTYLHKD YNNLWIIKKH NTNSDPLDPS
Predicted Reactivity:	Cow: 100%, Dog: 100%, Guinea Pig: 100%, Horse: 100%, Human: 100%, Mouse: 100%, Rabbit: 100%, Rat: 100%, Yeast: 86%, Zebrafish: 93%
Characteristics:	This is a rabbit polyclonal antibody against POMT2. It was validated on Western Blot using a cell lysate as a positive control.
Purification:	Affinity Purified

#### Target Details

Target:	POMT2
---------	-------

## Target Details

---

Alternative Name:	POMT2 ( <a href="#">POMT2 Products</a> )
Background:	<p>POMT2 is an integral membrane protein of the endoplasmic reticulum (ER) that shares significant sequence similarity with a family of protein O-mannosyltransferases of <i>S. cerevisiae</i>.</p> <p>Alias Symbols: DKFZp686G10254, FLJ22309, MDDGA2, MDDGB2, MDDGC2</p> <p>Protein Interaction Partner: POMT1,</p> <p>Protein Size: 348</p>
Molecular Weight:	38 kDa
Gene ID:	29954
NCBI Accession:	<a href="#">NM_013382</a>
UniProt:	<a href="#">Q9UKY4</a>

## Application Details

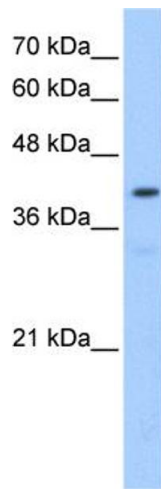
---

Application Notes:	Optimal working dilutions should be determined experimentally by the investigator.
Comment:	Antigen size: 348 AA
Restrictions:	For Research Use only

## Handling

---

Format:	Liquid
Concentration:	Lot specific
Buffer:	Liquid. Purified antibody supplied in 1x PBS buffer with 0.09 % (w/v) sodium azide and 2 % sucrose.
Preservative:	Sodium azide
Precaution of Use:	This product contains Sodium azide: a POISONOUS AND HAZARDOUS SUBSTANCE which should be handled by trained staff only.
Handling Advice:	Avoid repeated freeze-thaw cycles.
Storage:	-20 °C
Storage Comment:	For short term use, store at 2-8°C up to 1 week. For long term storage, store at -20°C in small aliquots to prevent freeze-thaw cycles.



### Western Blotting

**Image 1.** WB Suggested Anti-POMT2 Antibody Titration:  
0.2-1 ug/ml Positive Control: HepG2 cell lysate