

Datasheet for ABIN2782795  
**anti-ST6GALNAC6 antibody (C-Term)**[Go to Product page](#)

## 1 Image

## Overview

Quantity:	100 µL
Target:	ST6GALNAC6
Binding Specificity:	C-Term
Reactivity:	Human, Mouse, Rat, Rabbit, Dog, Guinea Pig, Horse, Cow
Host:	Rabbit
Clonality:	Polyclonal
Conjugate:	This ST6GALNAC6 antibody is un-conjugated
Application:	Western Blotting (WB)

## Product Details

Immunogen:	The immunogen is a synthetic peptide directed towards the C terminal region of human ST6GALNAC6
Sequence:	YHYEYEPKGPDCVYTIQNEHSRKGNNHRRFI TEKRVFSSWA QLYGITFSHP
Predicted Reactivity:	Cow: 93%, Dog: 100%, Guinea Pig: 100%, Horse: 100%, Human: 100%, Mouse: 100%, Rabbit: 100%, Rat: 100%
Characteristics:	This is a rabbit polyclonal antibody against ST6GALNAC6. It was validated on Western Blot using a cell lysate as a positive control.
Purification:	Affinity Purified

## Target Details

Target:	ST6GALNAC6
---------	------------

## Target Details

Alternative Name:	ST6GALNAC6 ( <a href="#">ST6GALNAC6 Products</a> )
Background:	<p>ST6GALNAC6 belongs to a family of sialyltransferases that modify proteins and ceramides on the cell surface to alter cell-cell or cell-extracellular matrix interactions. ST6GALNAC6 belongs to a family of sialyltransferases that modify proteins and ceramides on the cell surface to alter cell-cell or cell-extracellular matrix interactions (Tsuchida et al., 2003 [PubMed 12668675]). [supplied by OMIM].</p> <p>Alias Symbols: RP11-203J24.3, SIAT7F, ST6GALNACVI</p> <p>Protein Interaction Partner: ATXN1L, ATXN1,</p> <p>Protein Size: 333</p>
Molecular Weight:	38 kDa
Gene ID:	30815
NCBI Accession:	<a href="#">NM_013443</a> , <a href="#">NP_038471</a>
UniProt:	<a href="#">Q969X2</a>

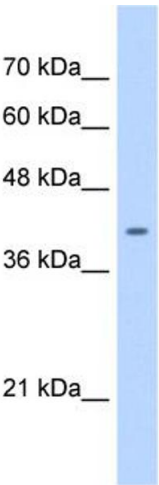
## Application Details

Application Notes:	Optimal working dilutions should be determined experimentally by the investigator.
Comment:	Antigen size: 333 AA
Restrictions:	For Research Use only

## Handling

Format:	Liquid
Concentration:	Lot specific
Buffer:	Liquid. Purified antibody supplied in 1x PBS buffer with 0.09 % (w/v) sodium azide and 2 % sucrose.
Preservative:	Sodium azide
Precaution of Use:	This product contains Sodium azide: a POISONOUS AND HAZARDOUS SUBSTANCE which should be handled by trained staff only.
Handling Advice:	Avoid repeated freeze-thaw cycles.
Storage:	-20 °C
Storage Comment:	For short term use, store at 2-8°C up to 1 week. For long term storage, store at -20°C in small

aliquots to prevent freeze-thaw cycles.



**Western Blotting**

**Image 1.** WB Suggested Anti-ST6GALNAC6 Antibody  
Titration: 0.2-1 ug/ml Positive Control: HepG2 cell lysate