



[Go to Product page](#)

Datasheet for ABIN2782800

anti-Astrotactin 2 antibody (N-Term)

2 Images

Overview

Quantity:	100 µL
Target:	Astrotactin 2 (ASTN2)
Binding Specificity:	N-Term
Reactivity:	Human, Mouse, Rat, Guinea Pig
Host:	Rabbit
Clonality:	Polyclonal
Conjugate:	This Astrotactin 2 antibody is un-conjugated
Application:	Western Blotting (WB), Immunocytochemistry (ICC)

Product Details

Immunogen:	The immunogen is a synthetic peptide directed towards the N terminal region of human ASTN2
Sequence:	LLFVRNELPG RIAVQDDLDN TELPFFTLEM SGTAADISLV HWRQQWLENG
Predicted Reactivity:	Guinea Pig: 100%, Human: 100%, Mouse: 100%, Rat: 100%
Characteristics:	This is a rabbit polyclonal antibody against ASTN2. It was validated on Western Blot.
Purification:	Affinity Purified

Target Details

Target:	Astrotactin 2 (ASTN2)
Alternative Name:	ASTN2 (ASTN2 Products)
Background:	ASTN2 may play an important role in neuronal functioning.

Target Details

Alias Symbols: KIAA0634, bA67K19.1

Protein Size: 1288

Molecular Weight: 142 kDa

Gene ID: 23245

NCBI Accession: [NM_014010](#), [NP_054729](#)

Application Details

Application Notes: Optimal working dilutions should be determined experimentally by the investigator.

Comment: Antigen size: 1288 AA

Restrictions: For Research Use only

Handling

Format: Liquid

Concentration: Lot specific

Buffer: Liquid. Purified antibody supplied in 1x PBS buffer with 0.09 % (w/v) sodium azide and 2 % sucrose.

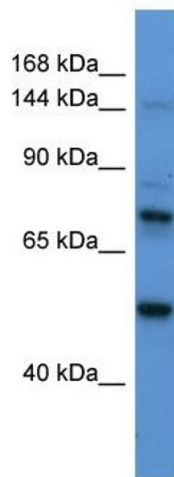
Preservative: Sodium azide

Precaution of Use: This product contains Sodium azide: a POISONOUS AND HAZARDOUS SUBSTANCE which should be handled by trained staff only.

Handling Advice: Avoid repeated freeze-thaw cycles.

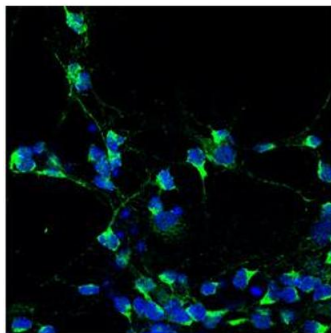
Storage: -20 °C

Storage Comment: For short term use, store at 2-8°C up to 1 week. For long term storage, store at -20°C in small aliquots to prevent freeze-thaw cycles.



Western Blotting

Image 1. WB Suggested Anti-ASTN2 Antibody Titration: 0.2-1 ug/ml ELISA Titer: 1:62500 Positive Control: Human Liver



ASTN2 (ARP46963_P050)
Immunocytochemistry
Mouse cerebellar granule cells
dilution: 1 to 100
Application data in forum

Submitted by:
Hourinaz Behesti
Rockefeller University

Immunocytochemistry

Image 2. Immunocytochemistry --Sample Type: Mouse cerebellar granule cells Dilution: 1:100