

Datasheet for ABIN2782801
anti-SACM1L antibody (N-Term)



[Go to Product page](#)

1 Image

Overview

Quantity:	100 µL
Target:	SACM1L
Binding Specificity:	N-Term
Reactivity:	Human, Mouse, Rat, Cow, Dog, Guinea Pig, Horse, Rabbit, Zebrafish (Danio rerio)
Host:	Rabbit
Clonality:	Polyclonal
Conjugate:	This SACM1L antibody is un-conjugated
Application:	Western Blotting (WB)

Product Details

Immunogen:	The immunogen is a synthetic peptide directed towards the N-terminal region of human SACM1L
Sequence:	HTLQRLSNTS PEFQEMSLLE RADQRFVWNG HLLRELSAQP EVHRFALPVL
Predicted Reactivity:	Cow: 100%, Dog: 100%, Guinea Pig: 100%, Horse: 100%, Human: 100%, Mouse: 100%, Rabbit: 100%, Rat: 100%, Zebrafish: 100%
Characteristics:	This is a rabbit polyclonal antibody against SACM1L. It was validated on Western Blot.
Purification:	Affinity Purified

Target Details

Target:	SACM1L
---------	--------

Target Details

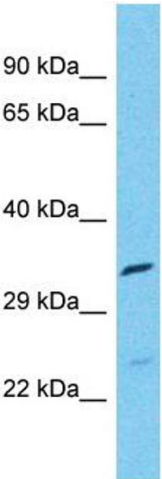
Alternative Name:	SACM1L (SACM1L Products)
Background:	<p>This gene encodes an integral membrane protein that is localized to the endoplasmic reticulum and golgi, and functions as a phosphoinositide lipid phosphatase. Studies in mammals suggest that this gene is involved in the organization of golgi membranes and the mitotic spindles.</p> <p>Alternatively spliced transcript variants have been found for this gene.</p> <p>Alias Symbols: SAC1</p> <p>Protein Size: 287</p>
Molecular Weight:	31 kDa
Gene ID:	22908
NCBI Accession:	NM_014016 , NP_054735
UniProt:	Q9NTJ5
Pathways:	Inositol Metabolic Process

Application Details

Application Notes:	Optimal working dilution should be determined by the investigator.
Restrictions:	For Research Use only

Handling

Format:	Liquid
Concentration:	1 mg/mL
Buffer:	Liquid. Purified antibody supplied in 1x PBS buffer with 0.09 % (w/v) sodium azide and 2 % sucrose.
Preservative:	Sodium azide
Precaution of Use:	This product contains Sodium azide: a POISONOUS AND HAZARDOUS SUBSTANCE which should be handled by trained staff only.
Handling Advice:	Avoid repeat freeze-thaw cycles.
Storage:	-20 °C
Storage Comment:	For short term use, store at 2-8°C up to 1 week. For long term storage, store at -20°C in small aliquots to prevent freeze-thaw cycles.



Western Blotting

Image 1. Host: Rabbit Target Name: SACM1L Sample Type: Thyroid Tumor lysates Antibody Dilution: 1.0ug/ml