

Datasheet for ABIN2782810  
**anti-GHITM antibody (Middle Region)**[Go to Product page](#)

## 1 Image

## Overview

Quantity:	100 µL
Target:	GHITM
Binding Specificity:	Middle Region
Reactivity:	Human, Mouse, Rat, Cow, Dog, Horse, Goat, Guinea Pig, Rabbit
Host:	Rabbit
Clonality:	Polyclonal
Conjugate:	This GHITM antibody is un-conjugated
Application:	Western Blotting (WB)

## Product Details

Immunogen:	The immunogen is a synthetic peptide corresponding to a region of Mouse
Sequence:	WVTIGATFAA MIGAGMLVHS ISYEQSPGPK HLAWMLHSGV MGAVVAPLTI
Predicted Reactivity:	Cow: 86%, Dog: 93%, Goat: 86%, Guinea Pig: 86%, Horse: 100%, Human: 100%, Mouse: 86%, Rabbit: 86%, Rat: 86%
Characteristics:	This is a rabbit polyclonal antibody against Ghitm. It was validated on Western Blot.
Purification:	Affinity Purified

## Target Details

Target:	GHITM
Alternative Name:	Ghitm ( <a href="#">GHITM Products</a> )

## Target Details

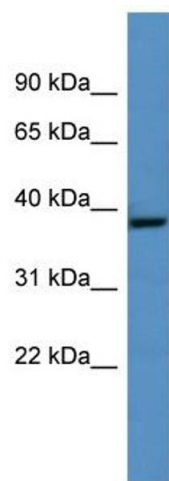
Background:	Ghitm is required for the mitochondrial tubular network and cristae organization. Ghitm is involved in apoptotic release of cytochrome c. Alias Symbols: 1010001P14Rik, C77840, PTD010, MICS1 Protein Size: 346
Molecular Weight:	37 kDa
Gene ID:	66092
NCBI Accession:	<a href="#">NM_078478</a> , <a href="#">NP_510963</a>
UniProt:	<a href="#">Q91VC9</a>
Pathways:	<a href="#">SARS-CoV-2 Protein Interactome</a>

## Application Details

Application Notes:	Optimal working dilutions should be determined experimentally by the investigator.
Comment:	Antigen size: 346 AA
Restrictions:	For Research Use only

## Handling

Format:	Liquid
Concentration:	Lot specific
Buffer:	Liquid. Purified antibody supplied in 1x PBS buffer with 0.09 % (w/v) sodium azide and 2 % sucrose.
Preservative:	Sodium azide
Precaution of Use:	This product contains Sodium azide: a POISONOUS AND HAZARDOUS SUBSTANCE which should be handled by trained staff only.
Handling Advice:	Avoid repeated freeze-thaw cycles.
Storage:	-20 °C
Storage Comment:	For short term use, store at 2-8°C up to 1 week. For long term storage, store at -20°C in small aliquots to prevent freeze-thaw cycles.



Western Blotting

**Image 1.** WB Suggested Anti-Ghitm Antibody Titration: 0.2-1 ug/ml ELISA Titer: 1:62500 Positive Control: Mouse Liver