

Datasheet for ABIN2782821  
**anti-ERVW-1 antibody (N-Term)**



[Go to Product page](#)

1 Image

## Overview

Quantity:	100 µL
Target:	ERVW-1
Binding Specificity:	N-Term
Reactivity:	Human, Rabbit
Host:	Rabbit
Clonality:	Polyclonal
Conjugate:	This ERVW-1 antibody is un-conjugated
Application:	Western Blotting (WB)

## Product Details

Immunogen:	The immunogen is a synthetic peptide directed towards the N terminal region of human ERVWE1
Sequence:	TQTGMSDGGG VQDQAREKHV KEVISQLTRV HGTSSPYKGL DLSKLHETLR
Predicted Reactivity:	Human: 100%, Rabbit: 91%
Characteristics:	This is a rabbit polyclonal antibody against ERVWE1. It was validated on Western Blot using a cell lysate as a positive control.
Purification:	Affinity Purified

## Target Details

Target:	ERVW-1
---------	--------

## Target Details

Alternative Name: ERVWE1 ([ERVW-1 Products](#))

Background: ERVWE1 or syncytin, is expressed in the placental syncytiotrophoblast and is involved in fusion of the cytotrophoblast cells to form the syncytial layer of the placenta. The protein has the characteristics of a typical retroviral envelope protein, including a furin cleavage site that separates the surface (SU) and transmembrane (TM) proteins which form a heterodimer. Alternatively spliced transcript variants encoding the same protein have been found for this gene. Many different human endogenous retrovirus (HERV) families are expressed in normal placental tissue at high levels, suggesting that HERVs are functionally important in reproduction. This gene is part of an HERV provirus on chromosome 7 that has inactivating mutations in the gag and pol genes. This gene is the envelope glycoprotein gene which appears to have been selectively preserved. The product of this gene, syncytin, is expressed in the placental syncytiotrophoblast and is involved in fusion of the cytotrophoblast cells to form the syncytial layer of the placenta. The protein has the characteristics of a typical retroviral envelope protein, including a furin cleavage site that separates the surface (SU) and transmembrane (TM) proteins which form a heterodimer. Publication Note: This RefSeq record includes a subset of the publications that are available for this gene. Please see the Entrez Gene record to access additional publications.

Alias Symbols: Env-W, HERV-7q, HERV-W, HERV-W-ENV, HERVW, env, syncytin, ENV, ENVW, ERVWE1, HERV7Q, HERVWENV

Protein Interaction Partner: SLC1A4, SLC1A5,

Protein Size: 538

Molecular Weight: 24 kDa

Gene ID: 30816

NCBI Accession: [NM\\_014590](#), [NP\\_055405](#)

UniProt: [Q9UQF0](#)

## Application Details

Application Notes: Optimal working dilutions should be determined experimentally by the investigator.

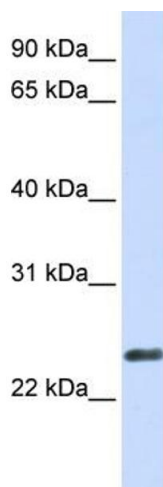
Comment: Antigen size: 538 AA

Restrictions: For Research Use only

## Handling

Format:	Liquid
Concentration:	Lot specific
Buffer:	Liquid. Purified antibody supplied in 1x PBS buffer with 0.09 % (w/v) sodium azide and 2 % sucrose.
Preservative:	Sodium azide
Precaution of Use:	This product contains Sodium azide: a POISONOUS AND HAZARDOUS SUBSTANCE which should be handled by trained staff only.
Handling Advice:	Avoid repeated freeze-thaw cycles.
Storage:	-20 °C
Storage Comment:	For short term use, store at 2-8°C up to 1 week. For long term storage, store at -20°C in small aliquots to prevent freeze-thaw cycles.

## Images



### Western Blotting

**Image 1.** WB Suggested Anti-ERVWE1 Antibody Titration: 0.2-1 ug/ml ELISA Titer: 1:312500 Positive Control: MCF7 cell lysate