

Datasheet for ABIN2782826
anti-EDEM1 antibody (N-Term)[Go to Product page](#)

1 Image

Overview

Quantity:	100 µL
Target:	EDEM1
Binding Specificity:	N-Term
Reactivity:	Human, Mouse, Cow, Rabbit, Rat, Guinea Pig, Dog, Saccharomyces cerevisiae
Host:	Rabbit
Clonality:	Polyclonal
Conjugate:	This EDEM1 antibody is un-conjugated
Application:	Western Blotting (WB)

Product Details

Immunogen:	The immunogen is a synthetic peptide directed towards the N terminal region of human EDEM1
Sequence:	MAHAF PQDEL NPIHCRGRGP DRGDPSNLNI NDVLGNYSLT LVDALDTLAI
Predicted Reactivity:	Cow: 100%, Dog: 93%, Guinea Pig: 100%, Human: 100%, Mouse: 100%, Rabbit: 100%, Rat: 100%, Yeast: 82%
Characteristics:	This is a rabbit polyclonal antibody against EDEM1. It was validated on Western Blot using a cell lysate as a positive control.
Purification:	Affinity Purified

Target Details

Target:	EDEM1
---------	-------

Target Details

Alternative Name:	EDEM1 (EDEM1 Products)
Background:	<p>EDEM1 belongs to the glycosyl hydrolase 47 family. It extracts misfolded glycoproteins, but not glycoproteins undergoing productive folding, from the calnexin cycle. It is directly involved in endoplasmic reticulum-associated degradation (ERAD) and targets misfolded glycoproteins for degradation in an N-glycan-dependent manner.</p> <p>Alias Symbols: EDEM, KIAA0212</p> <p>Protein Interaction Partner: HLA-B, SQSTM1, UBC, MMS19, SSR1, ASGR1, DERL1, DNAJC10, DERL2, SEC61B, SEL1L, RHO, CANX, RCOM_2159910, ASGR2, ELAVL1, BZW1,</p> <p>Protein Size: 657</p>
Molecular Weight:	74 kDa
Gene ID:	9695
NCBI Accession:	NM_014674 , NP_055489
UniProt:	Q92611
Pathways:	ER-Nucleus Signaling

Application Details

Application Notes:	Optimal working dilutions should be determined experimentally by the investigator.
Comment:	Antigen size: 657 AA
Restrictions:	For Research Use only

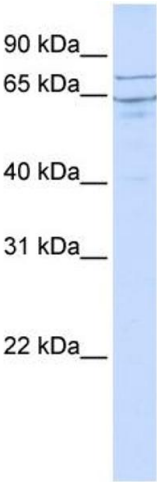
Handling

Format:	Liquid
Concentration:	Lot specific
Buffer:	Liquid. Purified antibody supplied in 1x PBS buffer with 0.09 % (w/v) sodium azide and 2 % sucrose.
Preservative:	Sodium azide
Precaution of Use:	This product contains Sodium azide: a POISONOUS AND HAZARDOUS SUBSTANCE which should be handled by trained staff only.
Handling Advice:	Avoid repeated freeze-thaw cycles.
Storage:	-20 °C

Handling

Storage Comment: For short term use, store at 2-8°C up to 1 week. For long term storage, store at -20°C in small aliquots to prevent freeze-thaw cycles.

Images



Western Blotting

Image 1. WB Suggested Anti-EDEM1 Antibody Titration: 0.2-1 ug/ml ELISA Titer: 1:312500 Positive Control: 721_B cell lysate EDEM1 is supported by BioGPS gene expression data to be expressed in 721_B