

Datasheet for ABIN2782830
anti-PTDSS1 antibody (N-Term)[Go to Product page](#)

2 Images

1 Publication

Overview

Quantity:	100 µL
Target:	PTDSS1
Binding Specificity:	N-Term
Reactivity:	Human, Cow, Mouse, Pig, Rat, Dog, Zebrafish (Danio rerio)
Host:	Rabbit
Clonality:	Polyclonal
Conjugate:	This PTDSS1 antibody is un-conjugated
Application:	Western Blotting (WB)

Product Details

Immunogen:	The immunogen is a synthetic peptide directed towards the N terminal region of human PTDSS1
Sequence:	MASCVGSRTL SKDDVNYKMH FRMINEQQVE DITIDFFYRP HTITLLSFTI
Predicted Reactivity:	Cow: 100%, Dog: 100%, Human: 100%, Mouse: 100%, Pig: 100%, Rat: 100%, Zebrafish: 91%
Characteristics:	This is a rabbit polyclonal antibody against PTDSS1. It was validated on Western Blot using a cell lysate as a positive control.
Purification:	Affinity Purified

Target Details

Target:	PTDSS1
---------	--------

Target Details

Alternative Name:	PTDSS1 (PTDSS1 Products)
Background:	<p>PTDSS1 is a multi-pass membrane protein. It belongs to the phosphatidyl serine synthase family. PTDSS1 catalyzes a base-exchange reaction in which the polar head group of phosphatidylcholine is replaced by L-serine.</p> <p>Alias Symbols: KIAA0024, PSSA, PSS1</p> <p>Protein Interaction Partner: UBC, STAU1, RNF2, ELAVL1,</p> <p>Protein Size: 473</p>
Molecular Weight:	55 kDa
Gene ID:	9791
NCBI Accession:	NM_014754 , NP_055569
UniProt:	P48651

Application Details

Application Notes:	Optimal working dilutions should be determined experimentally by the investigator.
Comment:	Antigen size: 473 AA
Restrictions:	For Research Use only

Handling

Format:	Liquid
Concentration:	Lot specific
Buffer:	Liquid. Purified antibody supplied in 1x PBS buffer with 0.09 % (w/v) sodium azide and 2 % sucrose.
Preservative:	Sodium azide
Precaution of Use:	This product contains Sodium azide: a POISONOUS AND HAZARDOUS SUBSTANCE which should be handled by trained staff only.
Handling Advice:	Avoid repeated freeze-thaw cycles.
Storage:	-20 °C
Storage Comment:	For short term use, store at 2-8°C up to 1 week. For long term storage, store at -20°C in small aliquots to prevent freeze-thaw cycles.

Publications

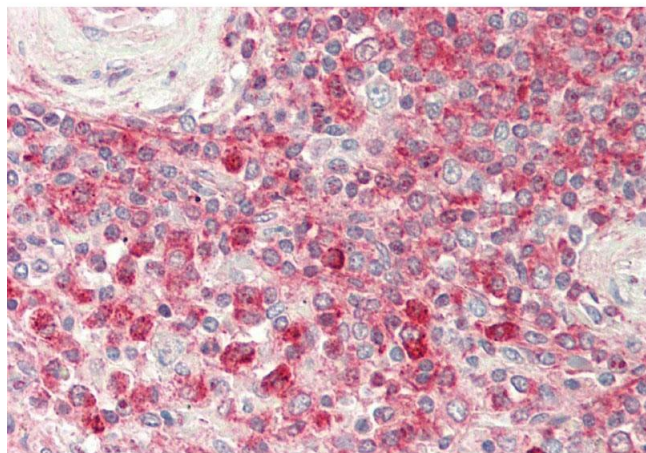
Product cited in: Mehrle, Rosenfelder, Schupp, del Val, Arlt, Hahne, Bechtel, Simpson, Hofmann, Hide, Glatting, Huber, Pepperkok, Poustka, Wiemann: "The LIFEdb database in 2006." in: **Nucleic acids research**, Vol. 34, Issue Database issue, pp. D415-8, (2005) ([PubMed](#)).

Images



Western Blotting

Image 1. WB Suggested Anti-PTDSS1 Antibody Titration: 0.2-1 ug/ml ELISA Titer: 1:62500 Positive Control: 293T cell lysate



Immunohistochemistry

Image 2. Rabbit Anti-PTDSS1 antibody Formalin Fixed Paraffin Embedded Tissue: Human Spleen Primary antibody Concentration: 1:100 Secondary Antibody: Donkey anti-Rabbit-Cy3 Secondary Antibody Concentration: 1:200 Magnification: 20x Exposure Time: 0.5-2.0sec