



[Go to Product page](#)

Datasheet for ABIN2782840  
**anti-SV2A antibody (Middle Region)**

3 Images

Overview

Quantity:	100 µL
Target:	SV2A
Binding Specificity:	Middle Region
Reactivity:	Human, Rat, Mouse, Dog, Cow, Horse, Rabbit, Guinea Pig, Zebrafish (Danio rerio)
Host:	Rabbit
Clonality:	Polyclonal
Conjugate:	This SV2A antibody is un-conjugated
Application:	Western Blotting (WB)

Product Details

Immunogen:	The immunogen is a synthetic peptide directed towards the middle region of human SV2A
Sequence:	LENQIHRGGQ YFNDKFIGLR LKSVSFEDSL FEECYFEDVT SSNTFFRNCT
Predicted Reactivity:	Cow: 100%, Dog: 100%, Guinea Pig: 100%, Horse: 100%, Human: 100%, Mouse: 100%, Rabbit: 100%, Rat: 100%, Zebrafish: 79%
Characteristics:	This is a rabbit polyclonal antibody against SV2A. It was validated on Western Blot using a cell lysate as a positive control.
Purification:	Affinity Purified

Target Details

Target:	SV2A
---------	------

## Target Details

---

Alternative Name:	SV2A ( <a href="#">SV2A Products</a> )
Background:	<p>SV2A plays a role in the control of regulated secretion in neural and endocrine cells, enhancing selectively low-frequency neurotransmission. It positively regulates vesicle fusion by maintaining the readily releasable pool of secretory vesicles.</p> <p>Alias Symbols: KIAA0736, SV2</p> <p>Protein Interaction Partner: ADRB2, ATXN1, UBC, LAMA5,</p> <p>Protein Size: 742</p>
Molecular Weight:	83 kDa
Gene ID:	9900
NCBI Accession:	<a href="#">NM_014849</a> , <a href="#">NP_055664</a>
UniProt:	<a href="#">Q7L0J3</a>

## Application Details

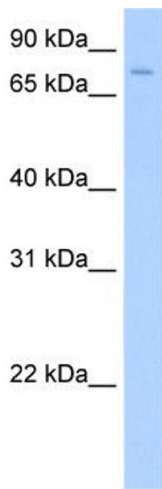
---

Application Notes:	Optimal working dilutions should be determined experimentally by the investigator.
Comment:	Antigen size: 742 AA
Restrictions:	For Research Use only

## Handling

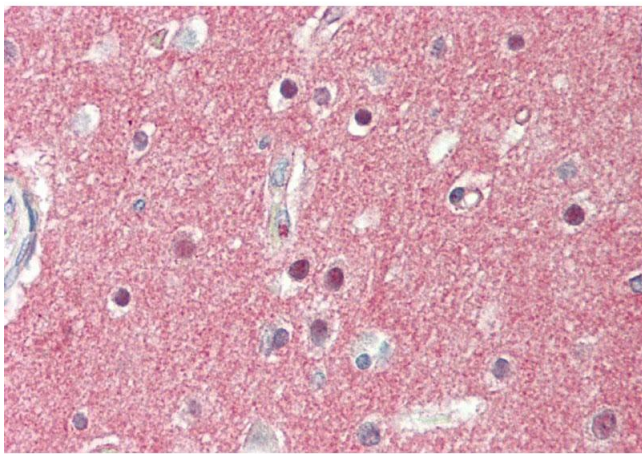
---

Format:	Liquid
Concentration:	Lot specific
Buffer:	Liquid. Purified antibody supplied in 1x PBS buffer with 0.09 % (w/v) sodium azide and 2 % sucrose.
Preservative:	Sodium azide
Precaution of Use:	This product contains Sodium azide: a POISONOUS AND HAZARDOUS SUBSTANCE which should be handled by trained staff only.
Handling Advice:	Avoid repeated freeze-thaw cycles.
Storage:	-20 °C
Storage Comment:	For short term use, store at 2-8°C up to 1 week. For long term storage, store at -20°C in small aliquots to prevent freeze-thaw cycles.



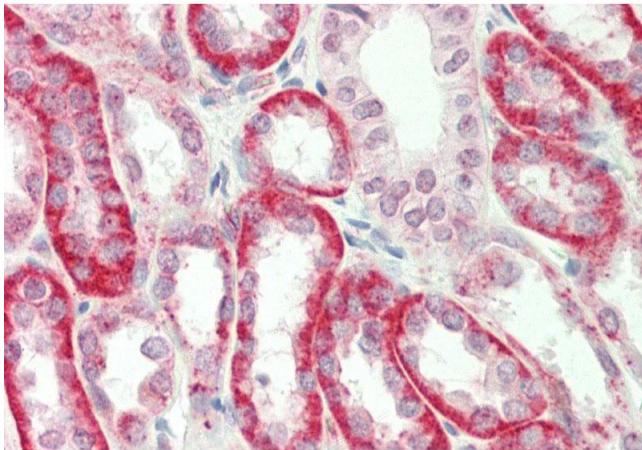
### Western Blotting

**Image 1.** WB Suggested Anti-SV2A Antibody Titration: 0.2-1 ug/ml Positive Control: Human brain



### Immunohistochemistry

**Image 2.** Rabbit Anti-SV2A antibody Formalin Fixed Paraffin Embedded Tissue: Human Brain, Cortex Primary antibody Concentration: 1:100 Secondary Antibody: Donkey anti-Rabbit-Cy3 Secondary Antibody Concentration: 1:200 Magnification: 20x Exposure Time: 0.5-2.0sec



### Immunohistochemistry

**Image 3.** Rabbit Anti-SV2A antibody Formalin Fixed Paraffin Embedded Tissue: Human Kidney Primary antibody Concentration: 1:100 Secondary Antibody: Donkey anti-Rabbit-Cy3 Secondary Antibody Concentration: 1:200 Magnification: 20x Exposure Time: 0.5-2.0sec