



[Go to Product page](#)

Datasheet for ABIN2782841

anti-KIAA1024 antibody (C-Term)

1 Image

Overview

Quantity:	100 µL
Target:	KIAA1024
Binding Specificity:	C-Term
Reactivity:	Human, Rat, Mouse, Cow, Dog, Guinea Pig, Horse, Rabbit
Host:	Rabbit
Clonality:	Polyclonal
Conjugate:	This KIAA1024 antibody is un-conjugated
Application:	Western Blotting (WB)

Product Details

Immunogen:	The immunogen is a synthetic peptide directed towards the C terminal region of human KIAA1024
Sequence:	DNKDWHRKSK EADRQYDIPP QHRLPKQPKD GFLVEQVFSP HPYPASLKAH
Predicted Reactivity:	Cow: 100%, Dog: 100%, Guinea Pig: 93%, Horse: 93%, Human: 100%, Mouse: 100%, Rabbit: 79%, Rat: 100%
Characteristics:	This is a rabbit polyclonal antibody against KIAA1024. It was validated on Western Blot using a cell lysate as a positive control.
Purification:	Affinity Purified

Target Details

Target:	KIAA1024
---------	----------

Target Details

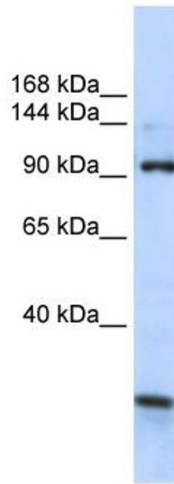
Alternative Name:	KIAA1024 (KIAA1024 Products)
Background:	<p>KIAA1024 is a single-pass membrane proteinPotential. It belongs to the UPF0258 family. The function of the KIAA1024 protein remains unknown.</p> <p>Alias Symbols: -</p> <p>Protein Size: 916</p>
Molecular Weight:	103 kDa
Gene ID:	23251
NCBI Accession:	NM_015206 , NP_056021
UniProt:	Q9UPX6

Application Details

Application Notes:	Optimal working dilutions should be determined experimentally by the investigator.
Comment:	Antigen size: 916 AA
Restrictions:	For Research Use only

Handling

Format:	Liquid
Concentration:	Lot specific
Buffer:	Liquid. Purified antibody supplied in 1x PBS buffer with 0.09 % (w/v) sodium azide and 2 % sucrose.
Preservative:	Sodium azide
Precaution of Use:	This product contains Sodium azide: a POISONOUS AND HAZARDOUS SUBSTANCE which should be handled by trained staff only.
Handling Advice:	Avoid repeated freeze-thaw cycles.
Storage:	-20 °C
Storage Comment:	For short term use, store at 2-8°C up to 1 week. For long term storage, store at -20°C in small aliquots to prevent freeze-thaw cycles.



Western Blotting

Image 1. WB Suggested Anti-KIAA1024 Antibody Titration:
0.2-1 ug/ml ELISA Titer: 1:312500 Positive Control: Human
brain