

Datasheet for ABIN2782843
anti-ZDHHC17 antibody (Middle Region)[Go to Product page](#)

3 Images

Overview

Quantity:	100 µL
Target:	ZDHHC17
Binding Specificity:	Middle Region
Reactivity:	Human, Mouse, Rat, Dog, Horse, Rabbit, Cow, Guinea Pig, Zebrafish (Danio rerio)
Host:	Rabbit
Clonality:	Polyclonal
Conjugate:	This ZDHHC17 antibody is un-conjugated
Application:	Western Blotting (WB), Immunohistochemistry (IHC)

Product Details

Immunogen:	The immunogen is a synthetic peptide directed towards the middle region of human ZDHHC17
Sequence:	LFYNFGKSWK SDPGIIKATE EQKKKTIVEL AETGSLDLSI FCSTCLIRKP
Predicted Reactivity:	Cow: 100%, Dog: 100%, Guinea Pig: 100%, Horse: 100%, Human: 100%, Mouse: 100%, Rabbit: 100%, Rat: 100%, Zebrafish: 93%
Characteristics:	This is a rabbit polyclonal antibody against ZDHHC17. It was validated on Western Blot using a cell lysate as a positive control.
Purification:	Affinity Purified

Target Details

Target:	ZDHHC17
---------	---------

Target Details

Alternative Name:	ZDHHC17 (ZDHHC17 Products)
Background:	<p>ZDHHC17 is a palmitoyltransferase specific for a subset of neuronal proteins, including SNAP25, DLG4/PSD95, GAD2, SYT1 and HD. It may be involved in the sorting or targeting of critical proteins involved in the initiating events of endocytosis at the plasma membrane. It may be involved in the NF-kappa-B signaling pathway and has transforming activity.</p> <p>Alias Symbols: HIP14, HIP3, HSPC294, HYPH, KIAA0946</p> <p>Protein Interaction Partner: SPRY2, HTT, UBC, ELAVL1, NFYC, SREBF2, DLG4, SNAP25, SYT1, GAD2,</p> <p>Protein Size: 632</p>
Molecular Weight:	73 kDa
Gene ID:	23390
NCBI Accession:	NM_015336 , NP_056151
UniProt:	Q8IUH5

Application Details

Application Notes:	Optimal working dilutions should be determined experimentally by the investigator.
Comment:	Antigen size: 632 AA
Restrictions:	For Research Use only

Handling

Format:	Liquid
Concentration:	Lot specific
Buffer:	Liquid. Purified antibody supplied in 1x PBS buffer with 0.09 % (w/v) sodium azide and 2 % sucrose.
Preservative:	Sodium azide
Precaution of Use:	This product contains Sodium azide: a POISONOUS AND HAZARDOUS SUBSTANCE which should be handled by trained staff only.
Handling Advice:	Avoid repeated freeze-thaw cycles.
Storage:	-20 °C
Storage Comment:	For short term use, store at 2-8°C up to 1 week. For long term storage, store at -20°C in small

aliquots to prevent freeze-thaw cycles.

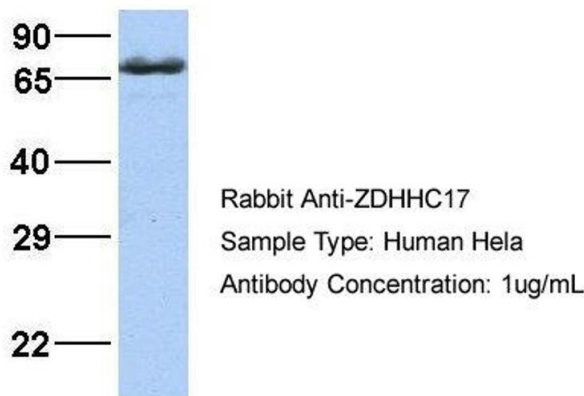
Images



Western Blotting

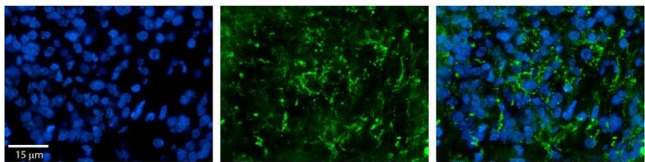
Image 1. WB Suggested Anti-ZDHHC17 Antibody Titration: 0.2-1 ug/ml Positive Control: Hela cell lysate ZDHHC17 is supported by BioGPS gene expression data to be expressed in HeLa

ZDHHC17



Western Blotting

Image 2. Host: Rabbit Target Name: ZDHHC17 Sample Type: Hela Antibody Dilution: 1.0ug/ml ZDHHC17 is supported by BioGPS gene expression data to be expressed in HeLa



Immunohistochemistry

Image 3. Rabbit Anti-ZDHHC17 Antibody Formalin Fixed Paraffin Embedded Tissue: Human Pineal Tissue Observed Staining: Cytoplasmic in vesicles and processes of pinealocytes Primary Antibody Concentration: 1:100 Secondary Antibody: Donkey anti-Rabbit-Cy3 Secondary Antibody Concentration: 1:200 Magnification: 20X Exposure Time: 0.5 - 2.0 sec