

Datasheet for ABIN2782845
anti-CTDNEP1A antibody (Middle Region)[Go to Product page](#)

2 Images

Overview

Quantity:	100 µL
Target:	CTDNEP1A
Binding Specificity:	Middle Region
Reactivity:	Human, Mouse, Rat, Rabbit, Cow, Zebrafish (Danio rerio), Dog, Guinea Pig, Horse
Host:	Rabbit
Clonality:	Polyclonal
Conjugate:	This CTDNEP1A antibody is un-conjugated
Application:	Western Blotting (WB)

Product Details

Immunogen:	The immunogen is a synthetic peptide directed towards the middle region of human DULLARD
Sequence:	HPDNAIPIKS WFSDPSDTAL LNLLPMLDAL RFTADVRSVL SRNLHQHRLW
Predicted Reactivity:	Cow: 100%, Dog: 100%, Guinea Pig: 100%, Horse: 100%, Human: 100%, Mouse: 100%, Rabbit: 100%, Rat: 100%, Zebrafish: 100%
Characteristics:	This is a rabbit polyclonal antibody against DULLARD. It was validated on Western Blot using a cell lysate as a positive control.
Purification:	Affinity Purified

Target Details

Target:	CTDNEP1A
---------	----------

Target Details

Alternative Name:	DULLARD (CTDNEP1A Products)
Background:	<p>DULLARD is a serine/threonine phosphatase which may be required for proper nuclear membrane morphology. DULLARD was involved in LPIN1 dephosphorylation. It may antagonize BMP signaling.</p> <p>Alias Symbols: HSA011916, NET56, DULLARD</p> <p>Protein Interaction Partner: CNEP1R1, UBC,</p> <p>Protein Size: 244</p>
Molecular Weight:	28 kDa
Gene ID:	23399
NCBI Accession:	NM_015343 , NP_056158
UniProt:	O95476

Application Details

Application Notes:	Optimal working dilutions should be determined experimentally by the investigator.
Comment:	Antigen size: 244 AA
Restrictions:	For Research Use only

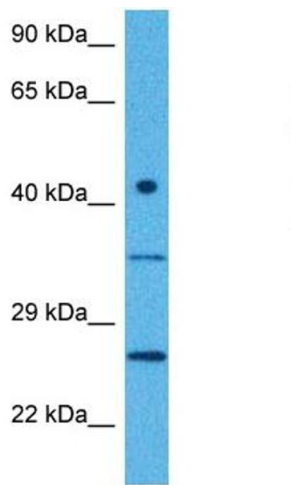
Handling

Format:	Liquid
Concentration:	Lot specific
Buffer:	Liquid. Purified antibody supplied in 1x PBS buffer with 0.09 % (w/v) sodium azide and 2 % sucrose.
Preservative:	Sodium azide
Precaution of Use:	This product contains Sodium azide: a POISONOUS AND HAZARDOUS SUBSTANCE which should be handled by trained staff only.
Handling Advice:	Avoid repeated freeze-thaw cycles.
Storage:	-20 °C
Storage Comment:	For short term use, store at 2-8°C up to 1 week. For long term storage, store at -20°C in small aliquots to prevent freeze-thaw cycles.



Western Blotting

Image 1. WB Suggested Anti-DULLARD Antibody Titration: 0.2-1 ug/ml ELISA Titer: 1:2500 Positive Control: Human Lung



Western Blotting

Image 2. Host: Rabbit Target Name: CTDNEP1 Sample Tissue: Human MCF7 Whole Cell Antibody Dilution: 1ug/ml