

Datasheet for ABIN2782846  
**anti-LRRC8B antibody (N-Term)**[Go to Product page](#)

1 Image

1 Publication

## Overview

Quantity:	100 µL
Target:	LRRC8B
Binding Specificity:	N-Term
Reactivity:	Human, Mouse, Rat, Cow, Dog, Guinea Pig, Horse, Rabbit
Host:	Rabbit
Clonality:	Polyclonal
Conjugate:	This LRRC8B antibody is un-conjugated
Application:	Western Blotting (WB)

## Product Details

Immunogen:	The immunogen is a synthetic peptide directed towards the N terminal region of human LRRC8B
Sequence:	PSTSSRLEHF VAILHKCFDS PWTTRALSET VAEQSVRPLK LSKSKILLSS
Predicted Reactivity:	Cow: 93%, Dog: 86%, Guinea Pig: 93%, Horse: 93%, Human: 100%, Mouse: 100%, Rabbit: 93%, Rat: 100%
Characteristics:	This is a rabbit polyclonal antibody against LRRC8B. It was validated on Western Blot using a cell lysate as a positive control.
Purification:	Affinity Purified

## Target Details

Target:	LRRC8B
---------	--------

## Target Details

Alternative Name:	LRRC8B ( <a href="#">LRRC8B Products</a> )
Background:	The exact function of LRRC8B remains unknown. Alias Symbols: KIAA0231, MGC42220, TA-LRRP, TALRRP Protein Interaction Partner: CUL3, Protein Size: 803
Molecular Weight:	92 kDa
Gene ID:	23507
NCBI Accession:	<a href="#">NM_015350</a> , <a href="#">NP_056165</a>
UniProt:	<a href="#">Q6P9F7</a>

## Application Details

Application Notes:	Optimal working dilutions should be determined experimentally by the investigator.
Comment:	Antigen size: 803 AA
Restrictions:	For Research Use only

## Handling

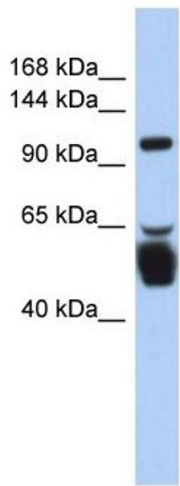
Format:	Liquid
Concentration:	Lot specific
Buffer:	Liquid. Purified antibody supplied in 1x PBS buffer with 0.09 % (w/v) sodium azide and 2 % sucrose.
Preservative:	Sodium azide
Precaution of Use:	This product contains Sodium azide: a POISONOUS AND HAZARDOUS SUBSTANCE which should be handled by trained staff only.
Handling Advice:	Avoid repeated freeze-thaw cycles.
Storage:	-20 °C
Storage Comment:	For short term use, store at 2-8°C up to 1 week. For long term storage, store at -20°C in small aliquots to prevent freeze-thaw cycles.

## Publications

Product cited in:	Weiner, Marganski, Wu, Altschuler, Kirschner: "An actin-based wave generator organizes cell
-------------------	---

motility." in: **PLoS biology**, Vol. 5, Issue 9, pp. e221, (2007) ([PubMed](#)).

Images



**Western Blotting**

**Image 1.** WB Suggested Anti-LRRC8B Antibody Titration: 0.2-1 ug/ml ELISA Titer: 1:62500 Positive Control: Human Stomach