

Datasheet for ABIN2782853
anti-TMEM158 antibody (Middle Region)[Go to Product page](#)

2 Images

Overview

Quantity:	100 µL
Target:	TMEM158
Binding Specificity:	Middle Region
Reactivity:	Mouse, Rat, Human, Cow, Pig
Host:	Rabbit
Clonality:	Polyclonal
Conjugate:	This TMEM158 antibody is un-conjugated
Application:	Western Blotting (WB)

Product Details

Immunogen:	The immunogen is a synthetic peptide directed towards the middle region of human TMEM158
Sequence:	AHGRAFFAAA FHRVGPPLLI EHLGLAAGGA QQDLRLCVGC GWVRGRRTGR
Predicted Reactivity:	Cow: 100%, Human: 100%, Mouse: 100%, Pig: 100%, Rat: 100%
Characteristics:	This is a rabbit polyclonal antibody against TMEM158. It was validated on Western Blot using a cell lysate as a positive control.
Purification:	Affinity Purified

Target Details

Target:	TMEM158
Alternative Name:	TMEM158 (TMEM158 Products)

Target Details

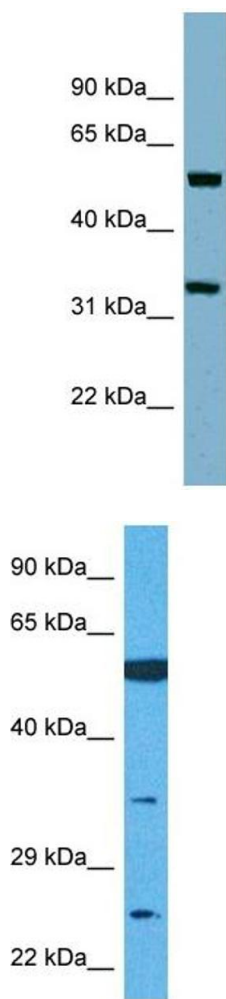
Background:	TMEM158 is the receptor for brain injury-derived neurotrophic peptide (BINP), a synthetic 13-mer peptide. Alias Symbols: BBP, DKFZp586E1621, RIS1, p40BBP Protein Size: 300
Molecular Weight:	30 kDa
Gene ID:	25907
NCBI Accession:	NM_000764 , NP_056259
UniProt:	Q8WZ71

Application Details

Application Notes:	Optimal working dilutions should be determined experimentally by the investigator.
Comment:	Antigen size: 300 AA
Restrictions:	For Research Use only

Handling

Format:	Liquid
Concentration:	Lot specific
Buffer:	Liquid. Purified antibody supplied in 1x PBS buffer with 0.09 % (w/v) sodium azide and 2 % sucrose.
Preservative:	Sodium azide
Precaution of Use:	This product contains Sodium azide: a POISONOUS AND HAZARDOUS SUBSTANCE which should be handled by trained staff only.
Handling Advice:	Avoid repeated freeze-thaw cycles.
Storage:	-20 °C
Storage Comment:	For short term use, store at 2-8°C up to 1 week. For long term storage, store at -20°C in small aliquots to prevent freeze-thaw cycles.



Western Blotting

Image 1. WB Suggested Anti-TMEM158 Antibody Titration: 0.2-1 ug/ml ELISA Titer: 1:12500 Positive Control: ACHN cell lysate

Western Blotting

Image 2. Host: Rabbit Target Name: TMEM158 Sample Tissue: Human U937 Whole Cell Antibody Dilution: 1ug/ml