

Datasheet for ABIN2782867  
**anti-ERGIC3 antibody (C-Term)**[Go to Product page](#)

## 2 Images

## Overview

Quantity:	100 µL
Target:	ERGIC3
Binding Specificity:	C-Term
Reactivity:	Human, Mouse, Rat, Cow, Pig, Rabbit, Dog, Horse, Zebrafish (Danio rerio), Guinea Pig
Host:	Rabbit
Clonality:	Polyclonal
Conjugate:	This ERGIC3 antibody is un-conjugated
Application:	Western Blotting (WB), Immunohistochemistry (IHC)

## Product Details

Immunogen:	The immunogen is a synthetic peptide directed towards the C terminal region of human ERGIC3
Sequence:	LTEKHRSFTH FLTGVCAIIG GMFTVAGLID SLIYHSARAI QKKIDLGKTT
Predicted Reactivity:	Cow: 100%, Dog: 100%, Guinea Pig: 93%, Horse: 100%, Human: 100%, Mouse: 100%, Pig: 100%, Rabbit: 100%, Rat: 100%, Zebrafish: 92%
Characteristics:	This is a rabbit polyclonal antibody against ERGIC3. It was validated on Western Blot using a cell lysate as a positive control.
Purification:	Affinity Purified

## Target Details

Target:	ERGIC3
---------	--------

## Target Details

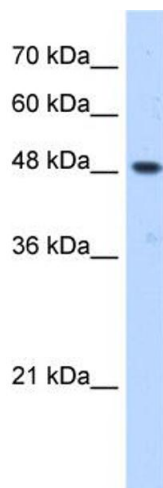
Alternative Name:	ERGIC3 ( <a href="#">ERGIC3 Products</a> )
Background:	ERGIC3 plays a possible role in transport between endoplasmic reticulum and Golgi. Alias Symbols: C20orf47, CGI-54, Erv46, NY-BR-84, PR00989, SDBCAG84, dJ47704.2 Protein Interaction Partner: UBC, env, CPSF7, ERGIC3, ERGIC1, Protein Size: 383
Molecular Weight:	43 kDa
Gene ID:	51614
NCBI Accession:	<a href="#">NM_015966</a> , <a href="#">NP_057050</a>
UniProt:	<a href="#">Q9Y282</a>

## Application Details

Application Notes:	Optimal working dilutions should be determined experimentally by the investigator.
Comment:	Antigen size: 383 AA
Restrictions:	For Research Use only

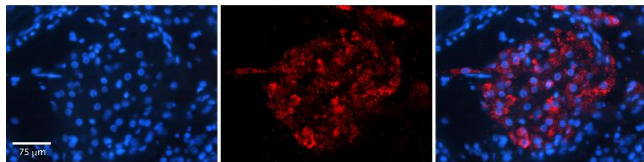
## Handling

Format:	Liquid
Concentration:	Lot specific
Buffer:	Liquid. Purified antibody supplied in 1x PBS buffer with 0.09 % (w/v) sodium azide and 2 % sucrose.
Preservative:	Sodium azide
Precaution of Use:	This product contains Sodium azide: a POISONOUS AND HAZARDOUS SUBSTANCE which should be handled by trained staff only.
Handling Advice:	Avoid repeated freeze-thaw cycles.
Storage:	-20 °C
Storage Comment:	For short term use, store at 2-8°C up to 1 week. For long term storage, store at -20°C in small aliquots to prevent freeze-thaw cycles.



#### Western Blotting

**Image 1.** WB Suggested Anti-ERGIC3 Antibody Titration: 0.2-1 ug/ml Positive Control: HepG2 cell lysate ERGIC3 is supported by BioGPS gene expression data to be expressed in HepG2



#### Immunohistochemistry

**Image 2.** Rabbit Anti-ERGIC3 Antibody Formalin Fixed Paraffin Embedded Tissue: Human Testis Tissue Observed Staining: Cytoplasm in Leydig cells Primary Antibody Concentration: N/A Other Working Concentrations: 1:600 Secondary Antibody: Donkey anti-Rabbit-Cy3 Secondary Antibody Concentration: 1:200 Magnification: 20X Exposure Time: 0.5 - 2.0 sec