

Datasheet for ABIN2782869
anti-HDHD2 antibody (N-Term)



[Go to Product page](#)

1 Image

Overview

Quantity:	100 µL
Target:	HDHD2
Binding Specificity:	N-Term
Reactivity:	Human, Rat, Mouse, Dog, Rabbit, Cow, Guinea Pig, Goat, Horse, Saccharomyces cerevisiae, Zebrafish (Danio rerio)
Host:	Rabbit
Clonality:	Polyclonal
Conjugate:	This HDHD2 antibody is un-conjugated
Application:	Western Blotting (WB)

Product Details

Immunogen:	The immunogen is a synthetic peptide directed towards the N-terminal region of Rat Hdhd2
Sequence:	LMQAALLCVN AIAVLHEERF LKNIGWGTDQ GIGGFGEPEG IKSQLLNLIR
Predicted Reactivity:	Cow: 100%, Dog: 100%, Goat: 92%, Guinea Pig: 100%, Horse: 100%, Human: 100%, Mouse: 100%, Rabbit: 100%, Rat: 100%, Yeast: 83%, Zebrafish: 100%
Characteristics:	This is a rabbit polyclonal antibody against Hdhd2. It was validated on Western Blot.
Purification:	Affinity Purified

Target Details

Target:	HDHD2
---------	-------

Target Details

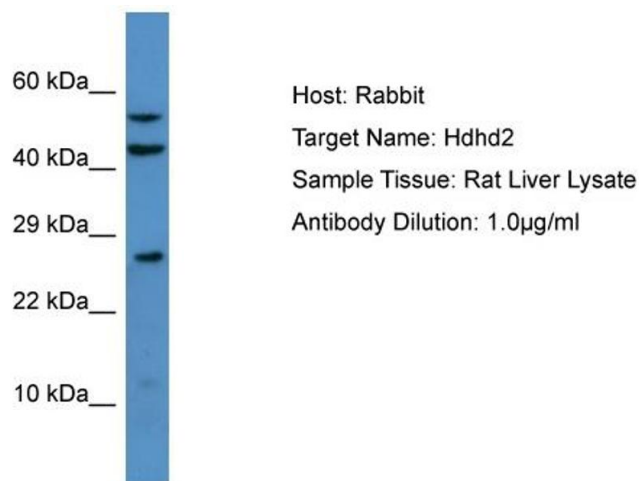
Alternative Name:	Hdhd2 (HDHD2 Products)
Background:	The function of this protein remains unknown. Alias Symbols: Ier3ip1, LRRG00122, RGD1308579 Protein Size: 384
Molecular Weight:	42 kDa
Gene ID:	361351
NCBI Accession:	NM_001014151 , NP_001014173
UniProt:	Q6QI86

Application Details

Restrictions:	For Research Use only
---------------	-----------------------

Handling

Format:	Liquid
Concentration:	1 mg/mL
Buffer:	Liquid. Purified antibody supplied in 1x PBS buffer with 0.09 % (w/v) sodium azide and 2 % sucrose.
Preservative:	Sodium azide
Precaution of Use:	This product contains Sodium azide: a POISONOUS AND HAZARDOUS SUBSTANCE which should be handled by trained staff only.
Handling Advice:	Avoid repeat freeze-thaw cycles.
Storage:	-20 °C
Storage Comment:	For short term use, store at 2-8°C up to 1 week. For long term storage, store at -20°C in small aliquots to prevent freeze-thaw cycles.



Western Blotting

Image 1. Host: Rabbit Target Name: Hdhd2 Sample Type: Rat Liver lysates Antibody Dilution: 1.0ug/ml