

Datasheet for ABIN2782870
anti-IER3IP1 antibody (N-Term)[Go to Product page](#)

1 Image

Overview

| | |
|----------------------|--|
| Quantity: | 100 µL |
| Target: | IER3IP1 |
| Binding Specificity: | N-Term |
| Reactivity: | Human, Mouse, Horse, Cow, Dog, Rabbit, Goat, Rat, Guinea Pig |
| Host: | Rabbit |
| Clonality: | Polyclonal |
| Conjugate: | This IER3IP1 antibody is un-conjugated |
| Application: | Western Blotting (WB) |

Product Details

| | |
|-----------------------|--|
| Immunogen: | The immunogen is a synthetic peptide corresponding to a region of Mouse |
| Sequence: | MQAALLCVNA IAVLHEERFL KNIGWGTDQG IGGFGEEPPI KSQLMNLIRS |
| Predicted Reactivity: | Cow: 100%, Dog: 100%, Goat: 100%, Guinea Pig: 100%, Horse: 100%, Human: 100%, Mouse: 100%, Rabbit: 100%, Rat: 100% |
| Characteristics: | This is a rabbit polyclonal antibody against Ier3ip1. It was validated on Western Blot. |
| Purification: | Affinity Purified |

Target Details

| | |
|-------------------|--|
| Target: | IER3IP1 |
| Alternative Name: | Ier3ip1 (IER3IP1 Products) |

Target Details

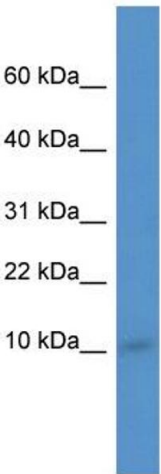
| | |
|-------------------|---|
| Background: | ler3ip1 may be involved in protein transport between endoplasmic reticulum and Golgi apparatus. Alias Symbols: 1110057H19Rik, AI644142, AL022842, AL022863, AV026606 Protein Size: 82 |
| Molecular Weight: | 9 kDa |
| Gene ID: | 66191 |
| NCBI Accession: | NM_025409 , NP_079685 |
| UniProt: | Q9CR20 |

Application Details

| | |
|--------------------|--|
| Application Notes: | Optimal working dilutions should be determined experimentally by the investigator. |
| Comment: | Antigen size: 82 AA |
| Restrictions: | For Research Use only |

Handling

| | |
|--------------------|---|
| Format: | Liquid |
| Concentration: | Lot specific |
| Buffer: | Liquid. Purified antibody supplied in 1x PBS buffer with 0.09 % (w/v) sodium azide and 2 % sucrose. |
| Preservative: | Sodium azide |
| Precaution of Use: | This product contains Sodium azide: a POISONOUS AND HAZARDOUS SUBSTANCE which should be handled by trained staff only. |
| Handling Advice: | Avoid repeated freeze-thaw cycles. |
| Storage: | -20 °C |
| Storage Comment: | For short term use, store at 2-8°C up to 1 week. For long term storage, store at -20°C in small aliquots to prevent freeze-thaw cycles. |



Western Blotting

Image 1. WB Suggested Anti-Ier3ip1 Antibody Titration:
0.2-1 ug/ml ELISA Titer: 1:62500 Positive Control: Mouse
Kidney