



[Go to Product page](#)

Datasheet for ABIN2782873

## anti-C19orf56 antibody (N-Term)

1 Image

1 Publication

### Overview

Quantity:	100 µL
Target:	C19orf56
Binding Specificity:	N-Term
Reactivity:	Human, Mouse, Rat, Cow, Dog, Guinea Pig, Horse, Rabbit
Host:	Rabbit
Clonality:	Polyclonal
Conjugate:	This C19orf56 antibody is un-conjugated
Application:	Western Blotting (WB)

### Product Details

Immunogen:	The immunogen is a synthetic peptide directed towards the N terminal region of human C19orf56
Sequence:	STNNMSDP RR PNKVLRYKPP PSECNPALDD PTPDYMNLLG MIFSMCGLML
Predicted Reactivity:	Cow: 100%, Dog: 100%, Guinea Pig: 100%, Horse: 100%, Human: 100%, Mouse: 100%, Rabbit: 100%, Rat: 100%
Characteristics:	This is a rabbit polyclonal antibody against C19orf56. It was validated on Western Blot using a cell lysate as a positive control.
Purification:	Affinity Purified

### Target Details

Target:	C19orf56
---------	----------

## Target Details

---

Alternative Name:	C19orf56 ( <a href="#">C19orf56 Products</a> )
Background:	The exact function of C19orf56 remains unknown. Alias Symbols: PTD008, C19orf56 Protein Interaction Partner: ATP13A2, Protein Size: 106
Molecular Weight:	12 kDa
Gene ID:	51398
NCBI Accession:	<a href="#">NM_016145</a> , <a href="#">NP_057229</a>
UniProt:	<a href="#">Q9Y284</a>

## Application Details

---

Application Notes:	Optimal working dilutions should be determined experimentally by the investigator.
Comment:	Antigen size: 106 AA
Restrictions:	For Research Use only

## Handling

---

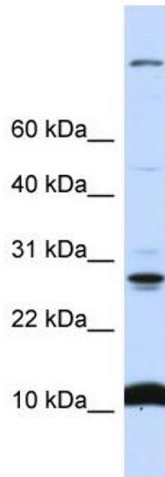
Format:	Liquid
Concentration:	Lot specific
Buffer:	Liquid. Purified antibody supplied in 1x PBS buffer with 0.09 % (w/v) sodium azide and 2 % sucrose.
Preservative:	Sodium azide
Precaution of Use:	This product contains Sodium azide: a POISONOUS AND HAZARDOUS SUBSTANCE which should be handled by trained staff only.
Handling Advice:	Avoid repeated freeze-thaw cycles.
Storage:	-20 °C
Storage Comment:	For short term use, store at 2-8°C up to 1 week. For long term storage, store at -20°C in small aliquots to prevent freeze-thaw cycles.

## Publications

---

Product cited in:	Suzuki, Fujisawa, Ando, Niino, Ohsawa, Shimokata, Ohta: "Alcohol dehydrogenase 2 variant is
-------------------	---

associated with cerebral infarction and lacunae." in: **Neurology**, Vol. 63, Issue 9, pp. 1711-3, (2004) ([PubMed](#)).



#### Western Blotting

**Image 1.** WB Suggested Anti-C19orf56 Antibody Titration: 0.2-1 ug/ml ELISA Titer: 1:312500 Positive Control: 721\_B cell lysate WDR830S is supported by BioGPS gene expression data to be expressed in 721\_B