

Datasheet for ABIN2782880
anti-IL1RL1 antibody (N-Term)



[Go to Product page](#)

1 Image

Overview

Quantity:	100 µL
Target:	IL1RL1
Binding Specificity:	N-Term
Reactivity:	Human, Mouse, Dog
Host:	Rabbit
Clonality:	Polyclonal
Conjugate:	This IL1RL1 antibody is un-conjugated
Application:	Western Blotting (WB)

Product Details

Immunogen:	The immunogen is a synthetic peptide directed towards the N terminal region of human IL1RL1
Sequence:	RQGKPSYTV D WYYSQTNKSI PTQERNRVFA SGQLLKFLPA AVADSGIYTC
Predicted Reactivity:	Dog: 79%, Human: 100%, Mouse: 79%
Characteristics:	This is a rabbit polyclonal antibody against IL1RL1. It was validated on Western Blot using a cell lysate as a positive control.
Purification:	Affinity Purified

Target Details

Target:	IL1RL1
Alternative Name:	IL1RL1 (IL1RL1 Products)

Target Details

Background:	<p>IL1RL1 is a member of the interleukin 1 receptor family. Studies of the similar gene in mouse suggested that this receptor can be induced by proinflammatory stimuli, and may be involved in the function of helper T cells. This gene, interleukin 1 receptor, type I (IL1R1), interleukin 1 receptor, type II (IL1R2) and interleukin 1 receptor-like 2 (IL1RL2) form a cytokine receptor gene cluster in a region mapped to chromosome 2q12. Alternative splicing of this gene results in multiple transcript variants. The protein encoded by this gene is a member of the interleukin 1 receptor family. Studies of the similar gene in mouse suggested that this receptor can be induced by proinflammatory stimuli, and may be involved in the function of helper T cells. This gene, interleukin 1 receptor, type I (IL1R1), interleukin 1 receptor, type II (IL1R2) and interleukin 1 receptor-like 2 (IL1RL2) form a cytokine receptor gene cluster in a region mapped to chromosome 2q12. Alternative splicing of this gene results in multiple transcript variants.</p> <p>Alias Symbols: DER4, FIT-1, MGC32623, ST2, ST2L, ST2V, T1, IL33R</p> <p>Protein Interaction Partner: CLEC7A, IRAK4, TRAF6, MYD88, IRAK1, APP, IL33, TIRAP, TMED1,</p> <p>Protein Size: 556</p>
-------------	--

Molecular Weight:	61 kDa
-------------------	--------

Gene ID:	9173
----------	------

NCBI Accession:	NM_016232 , NP_057316
-----------------	---

UniProt:	Q01638
----------	------------------------

Application Details

Application Notes:	Optimal working dilutions should be determined experimentally by the investigator.
--------------------	--

Comment:	Antigen size: 556 AA
----------	----------------------

Restrictions:	For Research Use only
---------------	-----------------------

Handling

Format:	Liquid
---------	--------

Concentration:	Lot specific
----------------	--------------

Buffer:	Liquid. Purified antibody supplied in 1x PBS buffer with 0.09 % (w/v) sodium azide and 2 % sucrose.
---------	---

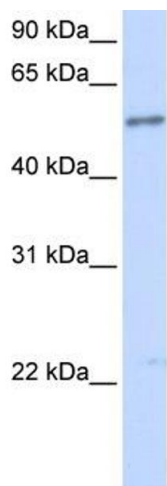
Preservative:	Sodium azide
---------------	--------------

Precaution of Use:	This product contains Sodium azide: a POISONOUS AND HAZARDOUS SUBSTANCE which
--------------------	---

Handling

	should be handled by trained staff only.
Handling Advice:	Avoid repeated freeze-thaw cycles.
Storage:	-20 °C
Storage Comment:	For short term use, store at 2-8°C up to 1 week. For long term storage, store at -20°C in small aliquots to prevent freeze-thaw cycles.

Images



Western Blotting

Image 1. WB Suggested Anti-IL1RL1 Antibody Titration: 0.2-1 ug/ml ELISA Titer: 1:312500 Positive Control: Human brain