

Datasheet for ABIN2782891  
**anti-TMEM69 antibody (Middle Region)**[Go to Product page](#)

## 3 Images

## Overview

Quantity:	100 µL
Target:	TMEM69
Binding Specificity:	Middle Region
Reactivity:	Human, Guinea Pig, Rabbit, Zebrafish (Danio rerio), Dog, Horse, Mouse, Rat
Host:	Rabbit
Clonality:	Polyclonal
Conjugate:	This TMEM69 antibody is un-conjugated
Application:	Western Blotting (WB), Immunohistochemistry (IHC)

## Product Details

Immunogen:	The immunogen is a synthetic peptide directed towards the middle region of human TMEM69
Sequence:	AYGASFLSFL GGIRWGFALP EGSPAKPDYL NLASSAAPLF FSWFAFLISE
Predicted Reactivity:	Dog: 86%, Guinea Pig: 86%, Horse: 93%, Human: 100%, Mouse: 86%, Rabbit: 86%, Rat: 93%, Zebrafish: 85%
Characteristics:	This is a rabbit polyclonal antibody against TMEM69. It was validated on Western Blot and immunohistochemistry.
Purification:	Affinity Purified

## Target Details

Target:	TMEM69
---------	--------

## Target Details

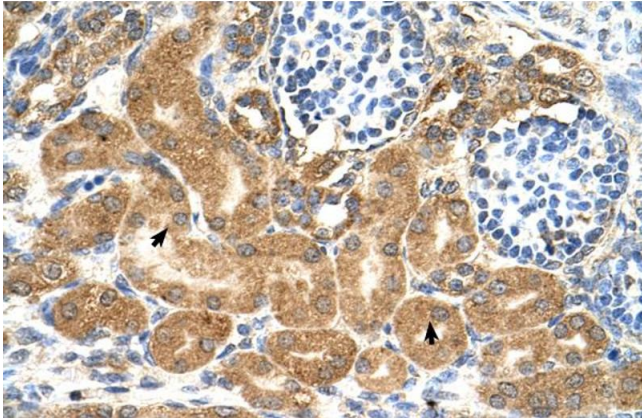
Alternative Name:	TMEM69 ( <a href="#">TMEM69 Products</a> )
Background:	The function remains unknown. Alias Symbols: C1orf154, FLJ21029, MGC104183, RP11-767N6.4 Protein Size: 247
Molecular Weight:	27 kDa
Gene ID:	51249
NCBI Accession:	<a href="#">NM_016486</a> , <a href="#">NP_057570</a>
UniProt:	<a href="#">Q5SWH9</a>

## Application Details

Application Notes:	Optimal working dilutions should be determined experimentally by the investigator.
Comment:	Antigen size: 247 AA
Restrictions:	For Research Use only

## Handling

Format:	Liquid
Concentration:	Lot specific
Buffer:	Liquid. Purified antibody supplied in 1x PBS buffer with 0.09 % (w/v) sodium azide and 2 % sucrose.
Preservative:	Sodium azide
Precaution of Use:	This product contains Sodium azide: a POISONOUS AND HAZARDOUS SUBSTANCE which should be handled by trained staff only.
Handling Advice:	Avoid repeated freeze-thaw cycles.
Storage:	-20 °C
Storage Comment:	For short term use, store at 2-8°C up to 1 week. For long term storage, store at -20°C in small aliquots to prevent freeze-thaw cycles.



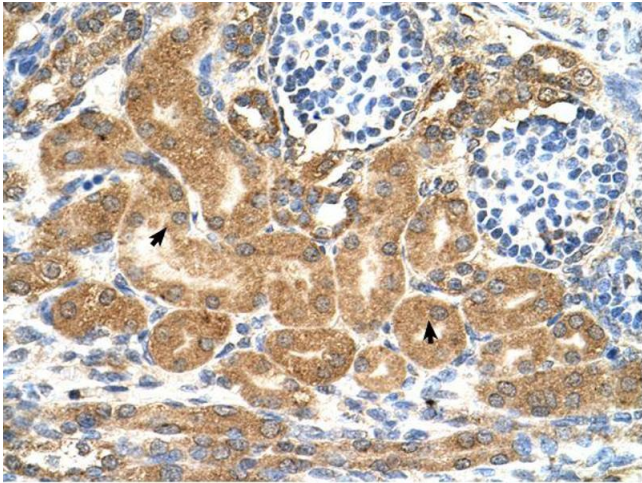
Immunohistochemistry

**Image 1.** Human kidney



Western Blotting

**Image 2.** WB Suggested Anti-TMEM69 Antibody Titration:  
0.5ug/ml Positive Control: HepG2 cell lysate



Immunohistochemistry

**Image 3.**