

Datasheet for ABIN2782892

**anti-C-Type Lectin Domain Family 1, Member B (CLEC1B) (N-Term) antibody**[Go to Product page](#)**2** Images

## Overview

Quantity:	100 µL
Target:	C-Type Lectin Domain Family 1, Member B (CLEC1B)
Binding Specificity:	N-Term
Reactivity:	Human, Mouse, Rat, Dog, Rabbit, Saccharomyces cerevisiae, Cow, Guinea Pig, Horse
Host:	Rabbit
Clonality:	Polyclonal
Conjugate:	Un-conjugated
Application:	Western Blotting (WB)

## Product Details

Sequence:	MQDEDGYITL NIKPRKQALS SAEPASSWWR VMALVLLISS MGLVVGLVAL
Predicted Reactivity:	Cow: 86%, Dog: 100%, Guinea Pig: 86%, Horse: 86%, Human: 100%, Mouse: 93%, Rabbit: 85%, Rat: 93%, Yeast: 100%
Characteristics:	This is a rabbit polyclonal antibody against Clec1b. It was validated on Western Blot.
Purification:	Affinity Purified

## Target Details

Target:	C-Type Lectin Domain Family 1, Member B (CLEC1B)
Alternative Name:	Clec1b ( <a href="#">CLEC1B Products</a> )
Target Type:	Viral Protein

## Target Details

Background:	<p>Clec1b acts as a receptor for the platelet-aggregating snake venom protein rhodocytin. Rhodocytin binding leads to tyrosine phosphorylation and this promotes the binding of spleen tyrosine kinase (Syk) and initiation of downstream tyrosine phosphorylation events and activation of PLC-gamma-2.</p> <p>Alias Symbols: 1810061113Rik, AI465458, Clec-2, Clec2, mCLEC-2</p> <p>Protein Size: 229</p>
-------------	---

Molecular Weight:	26 kDa
-------------------	--------

Gene ID:	56760
----------	-------

NCBI Accession:	<a href="#">NM_019985</a> , <a href="#">NP_064369</a>
-----------------	---

UniProt:	<a href="#">Q9JL99</a>
----------	------------------------

## Application Details

Application Notes:	Optimal working dilutions should be determined experimentally by the investigator.
--------------------	--

Comment:	Antigen size: 229 AA
----------	----------------------

Restrictions:	For Research Use only
---------------	-----------------------

## Handling

Format:	Liquid
---------	--------

Concentration:	Lot specific
----------------	--------------

Buffer:	Liquid. Purified antibody supplied in 1x PBS buffer with 0.09 % (w/v) sodium azide and 2 % sucrose.
---------	---

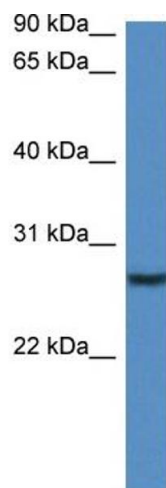
Preservative:	Sodium azide
---------------	--------------

Precaution of Use:	This product contains Sodium azide: a POISONOUS AND HAZARDOUS SUBSTANCE which should be handled by trained staff only.
--------------------	--

Handling Advice:	Avoid repeated freeze-thaw cycles.
------------------	------------------------------------

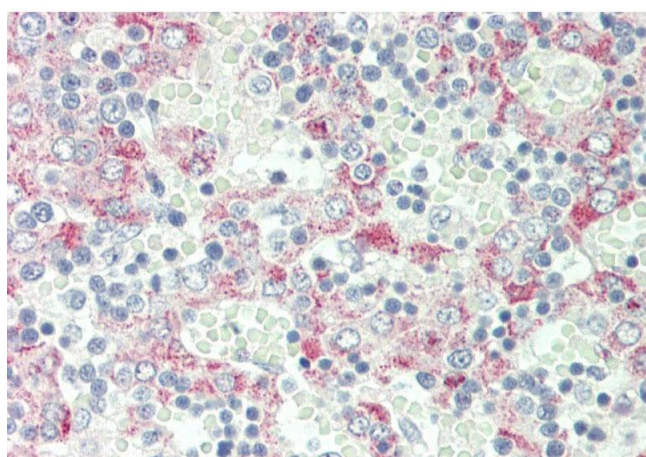
Storage:	-20 °C
----------	--------

Storage Comment:	For short term use, store at 2-8°C up to 1 week. For long term storage, store at -20°C in small aliquots to prevent freeze-thaw cycles.
------------------	---



#### Western Blotting

**Image 1.** WB Suggested Anti-Clec1b Antibody Titration: 1.0 ug/ml Positive Control: Mouse Pancreas



#### Immunohistochemistry

**Image 2.** Rabbit Anti-Clec1b antibody Formalin Fixed Paraffin Embedded Tissue: Human Fetal Liver Primary antibody Concentration: 1:50 Secondary Antibody: Donkey anti-Rabbit-Cy3 Secondary Antibody Concentration: 1:200 Magnification: 20x Exposure Time: 0.5-2.0sec