

Datasheet for ABIN2782894  
**anti-GOLM1 antibody (N-Term)**



[Go to Product page](#)

2 Images

## Overview

Quantity:	100 µL
Target:	GOLM1
Binding Specificity:	N-Term
Reactivity:	Human, Mouse, Rat, Dog, Horse, Rabbit, Cow, Guinea Pig
Host:	Rabbit
Clonality:	Polyclonal
Conjugate:	This GOLM1 antibody is un-conjugated
Application:	Western Blotting (WB)

## Product Details

Immunogen:	The immunogen is a synthetic peptide directed towards the N terminal region of human GOLM1
Sequence:	RSVDLQTRIM ELEGRVRRAA AERGAVELKK NEFQGELEKQ REQLDKIQSS
Predicted Reactivity:	Cow: 93%, Dog: 100%, Guinea Pig: 93%, Horse: 100%, Human: 100%, Mouse: 100%, Rabbit: 100%, Rat: 100%
Characteristics:	This is a rabbit polyclonal antibody against GOLM1. It was validated on Western Blot using a cell lysate as a positive control.
Purification:	Affinity Purified

## Target Details

Target:	GOLM1
---------	-------

## Target Details

Alternative Name:	GOLM1 ( <a href="#">GOLM1 Products</a> )
Background:	<p>GOLM1 is a type II Golgi transmembrane protein. It processes protein synthesized in the rough endoplasmic reticulum and assists in the transport of protein cargo through the Golgi apparatus. The expression of this encoded protein has been observed to be upregulated in response to viral infection. Two alternatively spliced transcript variants encoding the same protein have been described for this gene. The Golgi complex plays a key role in the sorting and modification of proteins exported from the endoplasmic reticulum. The protein encoded by this gene is a type II Golgi transmembrane protein. It processes protein synthesized in the rough endoplasmic reticulum and assists in the transport of protein cargo through the Golgi apparatus. The expression of this encoded protein has been observed to be upregulated in response to viral infection. Two alternatively spliced transcript variants encoding the same protein have been described for this gene.</p> <p>Alias Symbols: C9orf155, FLJ22634, FLJ23608, GOLPH2, GP73, PSEC0257, bA379P1.3</p> <p>Protein Interaction Partner: UBC, KCNE3, C1orf174, DEXI, NIPSNAP3A, CIAO1, NRSN2, ZFAND3, B3GNT4, RPL13A, DCTN2, EIF2B3, CLK1, LSM12, GEMIN7, FLOT1, ELAC2, SLC40A1, EIF3J, EFTUD2, GRIK5, MED22, SYT1, RPA2, GNB2L1, FTH1, DCK,</p> <p>Protein Size: 401</p>
Molecular Weight:	45 kDa
Gene ID:	51280
NCBI Accession:	<a href="#">NM_016548</a> , <a href="#">NP_057632</a>
UniProt:	<a href="#">Q8NBJ4</a>

## Application Details

Application Notes:	Optimal working dilutions should be determined experimentally by the investigator.
Comment:	Antigen size: 401 AA
Restrictions:	For Research Use only

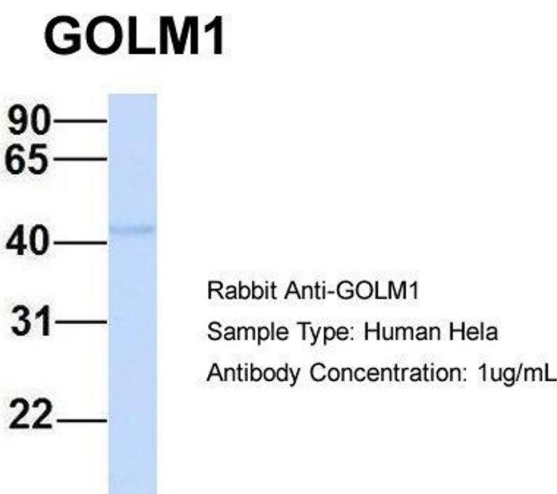
## Handling

Format:	Liquid
Concentration:	Lot specific
Buffer:	Liquid. Purified antibody supplied in 1x PBS buffer with 0.09 % (w/v) sodium azide and 2 % sucrose.

Handling

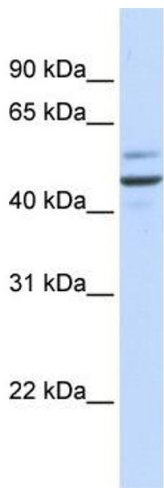
Preservative:	Sodium azide
Precaution of Use:	This product contains Sodium azide: a POISONOUS AND HAZARDOUS SUBSTANCE which should be handled by trained staff only.
Handling Advice:	Avoid repeated freeze-thaw cycles.
Storage:	-20 °C
Storage Comment:	For short term use, store at 2-8°C up to 1 week. For long term storage, store at -20°C in small aliquots to prevent freeze-thaw cycles.

Images



**Western Blotting**

**Image 1.** Host: Rabbit Target Name: GOLM1 Sample Type: Human HeLa Antibody Dilution: 1.0ug/ml GOLM1 is supported by BioGPS gene expression data to be expressed in HeLa



**Western Blotting**

**Image 2.** WB Suggested Anti-GOLM1 Antibody Titration: 0.2-1 ug/ml ELISA Titer: 1:312500 Positive Control: Human brain