

Datasheet for ABIN2782902  
**anti-GDE1 antibody (N-Term)**[Go to Product page](#)

## 2 Images

## Overview

Quantity:	100 µL
Target:	GDE1
Binding Specificity:	N-Term
Reactivity:	Human, Mouse, Rat, Dog, Cow, Guinea Pig, Rabbit, Zebrafish (Danio rerio), Horse
Host:	Rabbit
Clonality:	Polyclonal
Conjugate:	This GDE1 antibody is un-conjugated
Application:	Western Blotting (WB), Immunohistochemistry (IHC)

## Product Details

Immunogen:	The immunogen is a synthetic peptide directed towards the N terminal region of human GDE1
Sequence:	LRVFSFEPVP SCRALQVLKP RDRISAIHR GGSHDAPENT LAAIRQAAKN
Predicted Reactivity:	Cow: 100%, Dog: 100%, Guinea Pig: 100%, Horse: 93%, Human: 100%, Mouse: 100%, Rabbit: 100%, Rat: 100%, Zebrafish: 86%
Characteristics:	This is a rabbit polyclonal antibody against GDE1. It was validated on Western Blot and immunohistochemistry.
Purification:	Affinity Purified

## Target Details

Target:	GDE1
---------	------

## Target Details

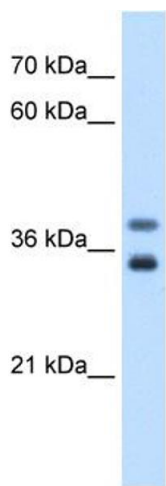
Alternative Name:	GDE1 ( <a href="#">GDE1 Products</a> )
Background:	<p>GDE1 has glycerophosphoinositol phosphodiesterase activity. It has little or no activity towards glycerophosphocholine. GDE1 activity can be modulated by G-protein signaling pathways.</p> <p>Alias Symbols: 363E6.2, GDE1, MIR16</p> <p>Protein Interaction Partner: CLGN, RGS1, RGS19, RGS16, RGS2,</p> <p>Protein Size: 331</p>
Molecular Weight:	38 kDa
Gene ID:	51573
NCBI Accession:	<a href="#">NM_016641</a> , <a href="#">NP_057725</a>
UniProt:	<a href="#">Q9NZC3</a>

## Application Details

Application Notes:	Optimal working dilutions should be determined experimentally by the investigator.
Comment:	Antigen size: 331 AA
Restrictions:	For Research Use only

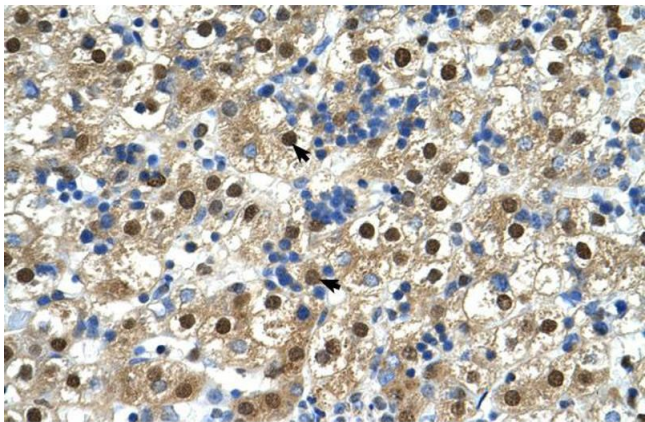
## Handling

Format:	Liquid
Concentration:	Lot specific
Buffer:	Liquid. Purified antibody supplied in 1x PBS buffer with 0.09 % (w/v) sodium azide and 2 % sucrose.
Preservative:	Sodium azide
Precaution of Use:	This product contains Sodium azide: a POISONOUS AND HAZARDOUS SUBSTANCE which should be handled by trained staff only.
Handling Advice:	Avoid repeated freeze-thaw cycles.
Storage:	-20 °C
Storage Comment:	For short term use, store at 2-8°C up to 1 week. For long term storage, store at -20°C in small aliquots to prevent freeze-thaw cycles.



### Western Blotting

**Image 1.** WB Suggested Anti-GDE1 Antibody Titration: 0.2-1 ug/ml Positive Control: Jurkat cell lysate



### Immunohistochemistry

**Image 2.** Human Liver