

Datasheet for ABIN2782907
anti-CECR1 antibody (N-Term)[Go to Product page](#)

1 Image

Overview

Quantity:	100 µL
Target:	CECR1
Binding Specificity:	N-Term
Reactivity:	Human
Host:	Rabbit
Clonality:	Polyclonal
Conjugate:	This CECR1 antibody is un-conjugated
Application:	Western Blotting (WB)

Product Details

Immunogen:	The immunogen is a synthetic peptide directed towards the N terminal region of human CECR1
Sequence:	MQFRFAHPTP RPSEKCSKWI LLEDYRKRQ NVTEFDDSL RNFTLVQHP
Predicted Reactivity:	Human: 100%
Characteristics:	This is a rabbit polyclonal antibody against CECR1. It was validated on Western Blot using a cell lysate as a positive control.
Purification:	Affinity Purified

Target Details

Target:	CECR1
Alternative Name:	CECR1 (CECR1 Products)

Target Details

Background:	<p>CECR1 a member of a subfamily of the adenosine deaminase protein family. It may act as a growth factor and have adenosine deaminase activity. This gene may be responsible for some of the phenotypic features associated with cat eye syndrome. Two transcript variants encoding distinct isoforms have been identified for this gene. This gene encodes a member of a subfamily of the adenosine deaminase protein family. The encoded protein may act as a growth factor and have adenosine deaminase activity. It may be responsible for some of the phenotypic features associated with cat eye syndrome. Two transcript variants encoding distinct isoforms have been identified for this gene.</p> <p>Alias Symbols: IDGFL, ADA2, ADGF</p> <p>Protein Interaction Partner: SRRM2,</p> <p>Protein Size: 511</p>
Molecular Weight:	56 kDa
Gene ID:	51816
NCBI Accession:	NM_017424 , NP_059120
UniProt:	Q9NZK5
Pathways:	Ribonucleoside Biosynthetic Process

Application Details

Application Notes:	Optimal working dilutions should be determined experimentally by the investigator.
Comment:	Antigen size: 511 AA
Restrictions:	For Research Use only

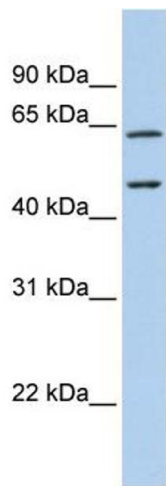
Handling

Format:	Liquid
Concentration:	Lot specific
Buffer:	Liquid. Purified antibody supplied in 1x PBS buffer with 0.09 % (w/v) sodium azide and 2 % sucrose.
Preservative:	Sodium azide
Precaution of Use:	This product contains Sodium azide: a POISONOUS AND HAZARDOUS SUBSTANCE which should be handled by trained staff only.
Handling Advice:	Avoid repeated freeze-thaw cycles.

Handling

Storage:	-20 °C
Storage Comment:	For short term use, store at 2-8°C up to 1 week. For long term storage, store at -20°C in small aliquots to prevent freeze-thaw cycles.

Images



Western Blotting

Image 1. WB Suggested Anti-CECR1 Antibody Titration: 0.2-1 ug/ml ELISA Titer: 1:312500 Positive Control: Human brain