

Datasheet for ABIN2782912  
**anti-QPCTL antibody (Middle Region)**[Go to Product page](#)[1 Image](#)[1 Publication](#)

## Overview

Quantity:	100 µL
Target:	QPCTL
Binding Specificity:	Middle Region
Reactivity:	Human, Mouse, Rat, Dog, Guinea Pig, Horse, Rabbit
Host:	Rabbit
Clonality:	Polyclonal
Conjugate:	This QPCTL antibody is un-conjugated
Application:	Western Blotting (WB)

## Product Details

Immunogen:	The immunogen is a synthetic peptide directed towards the middle region of human QPCTL
Sequence:	QLLFLDGEEA LKEWGPKDSL YGSRHLAQLM ESIPHSPGPT RIQAIELFML
Predicted Reactivity:	Dog: 93%, Guinea Pig: 92%, Horse: 86%, Human: 100%, Mouse: 100%, Rabbit: 93%, Rat: 100%
Characteristics:	This is a rabbit polyclonal antibody against QPCTL. It was validated on Western Blot using a cell lysate as a positive control.
Purification:	Affinity Purified

## Target Details

Target:	QPCTL
Alternative Name:	QPCTL ( <a href="#">QPCTL Products</a> )

## Target Details

Background:	QPCTL is a single-pass membrane proteinPotential. It belongs to the glutaminy-peptide cyclotransferase family. The exact function of QPCTL remains unknown. Alias Symbols: FLJ20084, gQC Protein Interaction Partner: DCP2, KLHL29, RNF2, FBXO6, TARDBP, Dlg4, NOS2, MYC, YWHAE, APP, AGO3, POLR1E, CDKN2C, E2F4, Protein Size: 382
Molecular Weight:	43 kDa
Gene ID:	54814
NCBI Accession:	<a href="#">NM_017659</a> , <a href="#">NP_060129</a>
UniProt:	<a href="#">Q9NXS2</a>

## Application Details

Application Notes:	Optimal working dilutions should be determined experimentally by the investigator.
Comment:	Antigen size: 382 AA
Restrictions:	For Research Use only

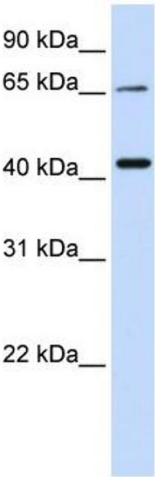
## Handling

Format:	Liquid
Concentration:	Lot specific
Buffer:	Liquid. Purified antibody supplied in 1x PBS buffer with 0.09 % (w/v) sodium azide and 2 % sucrose.
Preservative:	Sodium azide
Precaution of Use:	This product contains Sodium azide: a POISONOUS AND HAZARDOUS SUBSTANCE which should be handled by trained staff only.
Handling Advice:	Avoid repeated freeze-thaw cycles.
Storage:	-20 °C
Storage Comment:	For short term use, store at 2-8°C up to 1 week. For long term storage, store at -20°C in small aliquots to prevent freeze-thaw cycles.

Publications

Product cited in: Mehrle, Rosenfelder, Schupp, del Val, Arlt, Hahne, Bechtel, Simpson, Hofmann, Hide, Glatting, Huber, Pepperkok, Poustka, Wiemann: "The LIFEdb database in 2006." in: **Nucleic acids research**, Vol. 34, Issue Database issue, pp. D415-8, (2005) ([PubMed](#)).

Images



**Western Blotting**

**Image 1.** WB Suggested Anti-QPCTL Antibody Titration: 0.2-1 ug/ml ELISA Titer: 1:12500 Positive Control: 721\_B cell lysate QPCTL is supported by BioGPS gene expression data to be expressed in 721\_B