



[Go to Product page](#)

Datasheet for ABIN2782917
anti-TMEM161A antibody (Middle Region)

4 Images

Overview

Quantity:	100 µL
Target:	TMEM161A
Binding Specificity:	Middle Region
Reactivity:	Human, Mouse, Rat, Cow, Guinea Pig, Horse, Dog
Host:	Rabbit
Clonality:	Polyclonal
Conjugate:	This TMEM161A antibody is un-conjugated
Application:	Western Blotting (WB)

Product Details

Immunogen:	The immunogen is a synthetic peptide directed towards the middle region of human TMEM161A
Sequence:	LLAMLVQVVR EETLELGLEP GLASMTQNLE PLLKKQGDW ALPVAKLAIR
Predicted Reactivity:	Cow: 100%, Dog: 93%, Guinea Pig: 86%, Horse: 100%, Human: 100%, Mouse: 100%, Rat: 100%
Characteristics:	This is a rabbit polyclonal antibody against TMEM161A. It was validated on Western Blot using a cell lysate as a positive control.
Purification:	Affinity Purified

Target Details

Target:	TMEM161A
---------	----------

Target Details

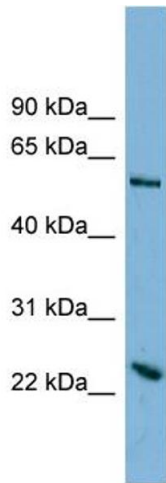
Alternative Name:	TMEM161A (TMEM161A Products)
Background:	The function of this protein remains unknown. Alias Symbols: AROS-29, FLJ20422, FLJ39645 Protein Interaction Partner: UBC, NR1H3, NR1H2, Protein Size: 479
Molecular Weight:	53 kDa
Gene ID:	54929
NCBI Accession:	NM_017814 , NP_060284
UniProt:	Q9NX61
Pathways:	Positive Regulation of Response to DNA Damage Stimulus

Application Details

Application Notes:	Optimal working dilutions should be determined experimentally by the investigator.
Comment:	Antigen size: 479 AA
Restrictions:	For Research Use only

Handling

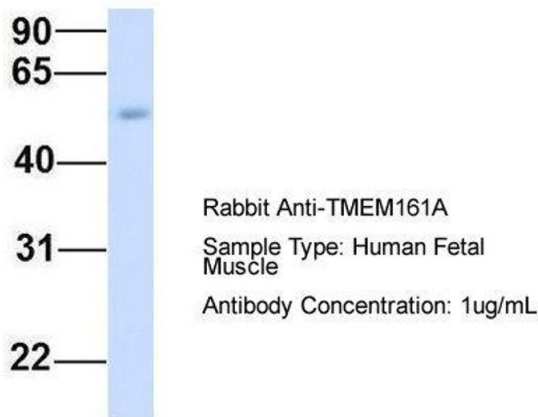
Format:	Liquid
Concentration:	Lot specific
Buffer:	Liquid. Purified antibody supplied in 1x PBS buffer with 0.09 % (w/v) sodium azide and 2 % sucrose.
Preservative:	Sodium azide
Precaution of Use:	This product contains Sodium azide: a POISONOUS AND HAZARDOUS SUBSTANCE which should be handled by trained staff only.
Handling Advice:	Avoid repeated freeze-thaw cycles.
Storage:	-20 °C
Storage Comment:	For short term use, store at 2-8°C up to 1 week. For long term storage, store at -20°C in small aliquots to prevent freeze-thaw cycles.



Western Blotting

Image 1. WB Suggested Anti-TMEM161A Antibody Titration: 0.2-1 ug/ml ELISA Titer: 1:62500 Positive Control: HT1080 cell lysate

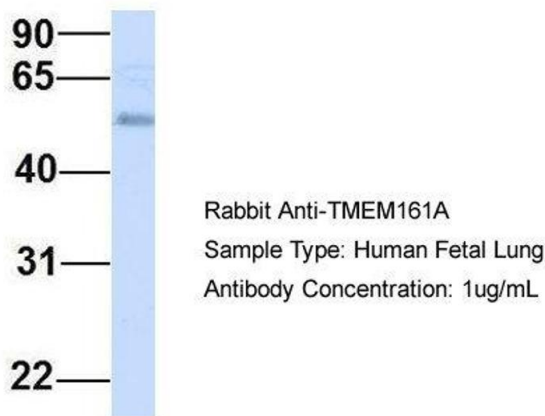
TMEM161A



Western Blotting

Image 2. Host: Rabbit Target Name: TMEM161A Sample Type: Human Fetal Muscle Antibody Dilution: 1.0ug/ml

TMEM161A



Western Blotting

Image 3. Host: Rabbit Target Name: TMEM161A Sample Type: Human Fetal Lung Antibody Dilution: 1.0ug/ml

Please check the [product details page](#) for more images. Overall 4 images are available for ABIN2782917.