

Datasheet for ABIN2782934

anti-SMPD4 antibody (Middle Region)



[Go to Product page](#)

1 Image

Overview

Quantity:	100 µL
Target:	SMPD4
Binding Specificity:	Middle Region
Reactivity:	Human, Mouse, Dog, Rat, Cow, Guinea Pig, Horse, Rabbit
Host:	Rabbit
Clonality:	Polyclonal
Conjugate:	This SMPD4 antibody is un-conjugated
Application:	Western Blotting (WB)

Product Details

Immunogen:	The immunogen is a synthetic peptide directed towards the middle region of Rat Smpd4
Sequence:	LHSPAQPSLQ ALHAYQESFM PTEEHVLVVR LLLKHLHAFA NSLKPDQASP
Predicted Reactivity:	Cow: 86%, Dog: 100%, Guinea Pig: 93%, Horse: 86%, Human: 100%, Mouse: 100%, Rabbit: 93%, Rat: 93%
Characteristics:	This is a rabbit polyclonal antibody against Smpd4. It was validated on Western Blot.
Purification:	Affinity Purified

Target Details

Target:	SMPD4
Alternative Name:	Smpd4 (SMPD4 Products)

Target Details

Background: The function of this protein remains unknown.
Alias Symbols: RGD1310674
Protein Size: 823

Molecular Weight: 90 kDa

Gene ID: 303790

NCBI Accession: [NM_001167806](#), [NP_001161278](#)

UniProt: [F1MAK9](#)

Application Details

Application Notes: Optimal working dilutions should be determined experimentally by the investigator.

Comment: Antigen size: 823 AA

Restrictions: For Research Use only

Handling

Format: Liquid

Concentration: Lot specific

Buffer: Liquid. Purified antibody supplied in 1x PBS buffer with 0.09 % (w/v) sodium azide and 2 % sucrose.

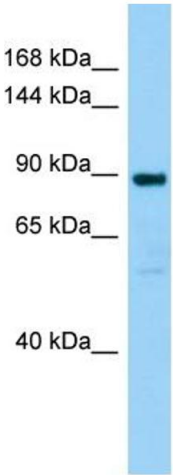
Preservative: Sodium azide

Precaution of Use: This product contains Sodium azide: a POISONOUS AND HAZARDOUS SUBSTANCE which should be handled by trained staff only.

Handling Advice: Avoid repeated freeze-thaw cycles.

Storage: -20 °C

Storage Comment: For short term use, store at 2-8°C up to 1 week. For long term storage, store at -20°C in small aliquots to prevent freeze-thaw cycles.



Host: Rabbit
Target Name: Smpd4
Sample Tissue: Rat Testis Lysate
Antibody Dilution: 1.0µg/ml

Western Blotting

Image 1. WB Suggested Anti-Smpd4 Antibody Titration:
1.0 ug/ml Positive Control: Rat Testis