



Datasheet for ABIN2782935
anti-SUSD4 antibody (N-Term)



[Go to Product page](#)

2 Images

Overview

Quantity:	100 µL
Target:	SUSD4
Binding Specificity:	N-Term
Reactivity:	Human, Mouse, Rat, Cow, Horse, Rabbit, Saccharomyces cerevisiae
Host:	Rabbit
Clonality:	Polyclonal
Conjugate:	This SUSD4 antibody is un-conjugated
Application:	Western Blotting (WB)

Product Details

Immunogen:	The immunogen is a synthetic peptide directed towards the N terminal region of human SUSD4
Sequence:	MYHGMNPSNG DGFLEQQQQQ QQPQSPQRLL AVILWFQLAL CFGPAQLTGG
Predicted Reactivity:	Cow: 100%, Horse: 100%, Human: 100%, Mouse: 93%, Rabbit: 85%, Rat: 93%, Yeast: 92%
Characteristics:	This is a rabbit polyclonal antibody against SUSD4. It was validated on Western Blot using a cell lysate as a positive control.
Purification:	Affinity Purified

Target Details

Target:	SUSD4
Alternative Name:	SUSD4 (SUSD4 Products)

Target Details

Background:	SUSD4 contains 4 Sushi (CCP/SCR) domains. It is a single-pass type I membrane protein. The function of the SUSD4 protein remains unknown. Alias Symbols: FLJ10052, PRO222, RP11-239E10.4 Protein Size: 290
Molecular Weight:	32 kDa
Gene ID:	55061
NCBI Accession:	NM_001037175 , NP_001032252
UniProt:	Q5VX71

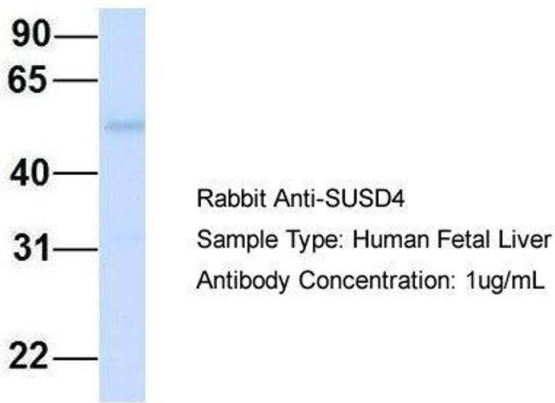
Application Details

Application Notes:	Optimal working dilutions should be determined experimentally by the investigator.
Comment:	Antigen size: 290 AA
Restrictions:	For Research Use only

Handling

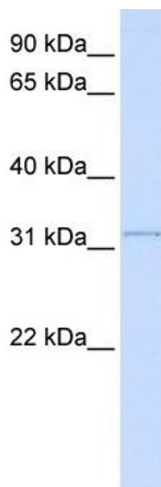
Format:	Liquid
Concentration:	Lot specific
Buffer:	Liquid. Purified antibody supplied in 1x PBS buffer with 0.09 % (w/v) sodium azide and 2 % sucrose.
Preservative:	Sodium azide
Precaution of Use:	This product contains Sodium azide: a POISONOUS AND HAZARDOUS SUBSTANCE which should be handled by trained staff only.
Handling Advice:	Avoid repeated freeze-thaw cycles.
Storage:	-20 °C
Storage Comment:	For short term use, store at 2-8°C up to 1 week. For long term storage, store at -20°C in small aliquots to prevent freeze-thaw cycles.

SUSD4



Western Blotting

Image 1. Host: Rabbit Target Name: SUSD4 Sample Type: Human Fetal Liver Antibody Dilution: 1.0ug/ml



Western Blotting

Image 2. WB Suggested Anti-SUSD4 Antibody Titration: 0.2-1 ug/ml ELISA Titer: 1:12500 Positive Control: Human Lung