



[Go to Product page](#)

Datasheet for ABIN2782936

## anti-SUSD4 antibody (Middle Region)

### 1 Image

#### Overview

Quantity:	100 µL
Target:	SUSD4
Binding Specificity:	Middle Region
Reactivity:	Human, Mouse, Rat, Cow, Horse, Rabbit, Dog, Guinea Pig, Zebrafish (Danio rerio)
Host:	Rabbit
Clonality:	Polyclonal
Conjugate:	This SUSD4 antibody is un-conjugated
Application:	Western Blotting (WB)

#### Product Details

Immunogen:	The immunogen is a synthetic peptide directed towards the middle region of human SUSD4
Sequence:	HGDFVCHPRP CERYNHGTVV EFYCDPGYSL TSDYKYITCQ YGEWFPSYQV
Predicted Reactivity:	Cow: 100%, Dog: 100%, Guinea Pig: 100%, Horse: 100%, Human: 100%, Mouse: 100%, Rabbit: 100%, Rat: 100%, Zebrafish: 85%
Characteristics:	This is a rabbit polyclonal antibody against SUSD4. It was validated on Western Blot using a cell lysate as a positive control.
Purification:	Affinity Purified

#### Target Details

Target:	SUSD4
---------	-------

## Target Details

---

Alternative Name:	SUSD4 ( <a href="#">SUSD4 Products</a> )
Background:	<p>SUSD4 contains 4 Sushi (CCP/SCR) domains. It is a single-pass type I membrane protein. The function of the SUSD4 protein remains unknown.</p> <p>Alias Symbols: FLJ10052, PRO222, RP11-239E10.4</p> <p>Protein Size: 490</p>
Molecular Weight:	54 kDa
Gene ID:	55061
NCBI Accession:	<a href="#">NM_017982</a> , <a href="#">NP_060452</a>
UniProt:	<a href="#">Q5VX71</a>

## Application Details

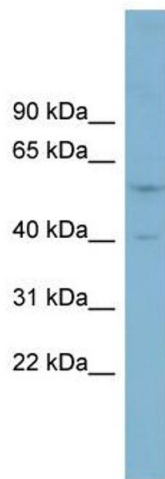
---

Application Notes:	Optimal working dilutions should be determined experimentally by the investigator.
Comment:	Antigen size: 490 AA
Restrictions:	For Research Use only

## Handling

---

Format:	Liquid
Concentration:	Lot specific
Buffer:	Liquid. Purified antibody supplied in 1x PBS buffer with 0.09 % (w/v) sodium azide and 2 % sucrose.
Preservative:	Sodium azide
Precaution of Use:	This product contains Sodium azide: a POISONOUS AND HAZARDOUS SUBSTANCE which should be handled by trained staff only.
Handling Advice:	Avoid repeated freeze-thaw cycles.
Storage:	-20 °C
Storage Comment:	For short term use, store at 2-8°C up to 1 week. For long term storage, store at -20°C in small aliquots to prevent freeze-thaw cycles.



### Western Blotting

**Image 1.** WB Suggested Anti-SUSD4 Antibody Titration:  
0.2-1 ug/ml ELISA Titer: 1:1562500 Positive Control:  
PANC1 cell lysate