

Datasheet for ABIN2782942  
**anti-NETO2 antibody (N-Term)**[Go to Product page](#)

## 2 Images

## Overview

Quantity:	100 µL
Target:	NETO2
Binding Specificity:	N-Term
Reactivity:	Human, Mouse, Rat, Rabbit, Cow, Guinea Pig, Horse, Dog
Host:	Rabbit
Clonality:	Polyclonal
Conjugate:	This NETO2 antibody is un-conjugated
Application:	Western Blotting (WB), Immunohistochemistry (IHC)

## Product Details

Immunogen:	The immunogen is a synthetic peptide directed towards the N terminal region of human NETO2
Sequence:	ELSGADGIVR SSQVEQEEKT KPGQAVDCIW TIKATPKAKI YLRFLDYQME
Predicted Reactivity:	Cow: 100%, Dog: 100%, Guinea Pig: 100%, Horse: 93%, Human: 100%, Mouse: 100%, Rabbit: 100%, Rat: 100%
Characteristics:	This is a rabbit polyclonal antibody against NETO2. It was validated on Western Blot using a cell lysate as a positive control.
Purification:	Affinity Purified

## Target Details

Target:	NETO2
---------	-------

## Target Details

Alternative Name:	NETO2 ( <a href="#">NETO2 Products</a> )
Background:	<p>NETO2 is a predicted transmembrane protein containing two extracellular CUB domains followed by a low-density lipoprotein class A (LDLa) domain. It also has an intracellular FXNPXY-like motif, which has been shown in other proteins to be essential for the internalization of clathrin coated pits during endocytosis. This gene encodes a predicted transmembrane protein containing two extracellular CUB domains followed by a low-density lipoprotein class A (LDLa) domain. It also has an intracellular FXNPXY-like motif, which has been shown in other proteins to be essential for the internalization of clathrin coated pits during endocytosis. Alternatively spliced transcript variants have been observed, but they have not been fully characterized.</p> <p>Alias Symbols: FLJ10430, FLJ14724, FLJ90456, NEOT2, BTCL2</p> <p>Protein Interaction Partner: ELAVL1,</p> <p>Protein Size: 525</p>
Molecular Weight:	57 kDa
Gene ID:	81831
NCBI Accession:	<a href="#">NM_018092</a> , <a href="#">NP_060562</a>
UniProt:	<a href="#">Q8NC67</a>

## Application Details

Application Notes:	Optimal working dilutions should be determined experimentally by the investigator.
Comment:	Antigen size: 525 AA
Restrictions:	For Research Use only

## Handling

Format:	Liquid
Concentration:	Lot specific
Buffer:	Liquid. Purified antibody supplied in 1x PBS buffer with 0.09 % (w/v) sodium azide and 2 % sucrose.
Preservative:	Sodium azide
Precaution of Use:	This product contains Sodium azide: a POISONOUS AND HAZARDOUS SUBSTANCE which should be handled by trained staff only.

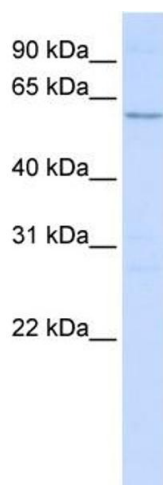
## Handling

Handling Advice: Avoid repeated freeze-thaw cycles.

Storage: -20 °C

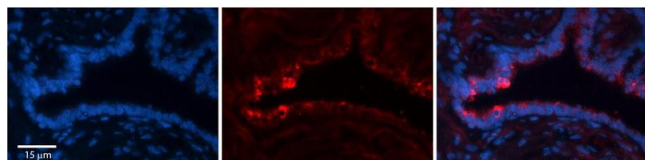
Storage Comment: For short term use, store at 2-8°C up to 1 week. For long term storage, store at -20°C in small aliquots to prevent freeze-thaw cycles.

## Images



### Western Blotting

**Image 1.** WB Suggested Anti-NETO2 Antibody Titration: 0.2-1 ug/ml ELISA Titer: 1:62500 Positive Control: 721\_B cell lysate NETO2 is supported by BioGPS gene expression data to be expressed in 721\_B



### Immunohistochemistry

**Image 2.** Rabbit Anti-NETO2 Antibody Formalin Fixed Paraffin Embedded Tissue: Human Bronchial Epithelial Tissue Observed Staining: Cytoplasmic Primary Antibody Concentration: 1:100 Secondary Antibody: Donkey anti-Rabbit-Cy3 Secondary Antibody Concentration: 1:200 Magnification: 20X Exposure Time: 0.5 - 2.0 sec