



Datasheet for ABIN2782949
anti-TMEM57 antibody (N-Term)



[Go to Product page](#)

4 Images

Overview

Quantity:	100 µL
Target:	TMEM57
Binding Specificity:	N-Term
Reactivity:	Human, Mouse, Rat, Dog, Rabbit, Cow, Zebrafish (Danio rerio), Guinea Pig, Horse
Host:	Rabbit
Clonality:	Polyclonal
Conjugate:	This TMEM57 antibody is un-conjugated
Application:	Western Blotting (WB)

Product Details

Immunogen:	The immunogen is a synthetic peptide directed towards the N terminal region of human TMEM57
Sequence:	VVWALVLLAD FVLEFRFEYL WPFWLFIRSV YDSFRYQGLA FSVFFVCVAF
Predicted Reactivity:	Cow: 100%, Dog: 100%, Guinea Pig: 100%, Horse: 100%, Human: 100%, Mouse: 100%, Rabbit: 100%, Rat: 100%, Zebrafish: 100%
Characteristics:	This is a rabbit polyclonal antibody against TMEM57. It was validated on Western Blot using a cell lysate as a positive control.
Purification:	Affinity Purified

Target Details

Target:	TMEM57
---------	--------

Target Details

Alternative Name:	TMEM57 (TMEM57 Products)
Background:	The exact function of this protein remains unknown Alias Symbols: FLJ10747, FLJ23007 Protein Interaction Partner: UBC, SMAD9, Protein Size: 664
Molecular Weight:	76 kDa
Gene ID:	55219
NCBI Accession:	NM_018202 , NP_060672
UniProt:	Q8N5G2

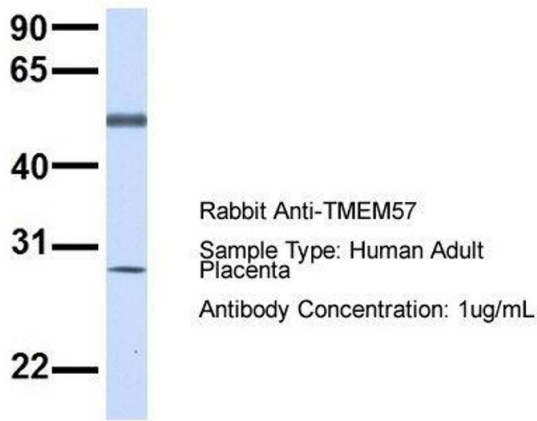
Application Details

Application Notes:	Optimal working dilutions should be determined experimentally by the investigator.
Comment:	Antigen size: 664 AA
Restrictions:	For Research Use only

Handling

Format:	Liquid
Concentration:	Lot specific
Buffer:	Liquid. Purified antibody supplied in 1x PBS buffer with 0.09 % (w/v) sodium azide and 2 % sucrose.
Preservative:	Sodium azide
Precaution of Use:	This product contains Sodium azide: a POISONOUS AND HAZARDOUS SUBSTANCE which should be handled by trained staff only.
Handling Advice:	Avoid repeated freeze-thaw cycles.
Storage:	-20 °C
Storage Comment:	For short term use, store at 2-8°C up to 1 week. For long term storage, store at -20°C in small aliquots to prevent freeze-thaw cycles.

TMEM57



Western Blotting

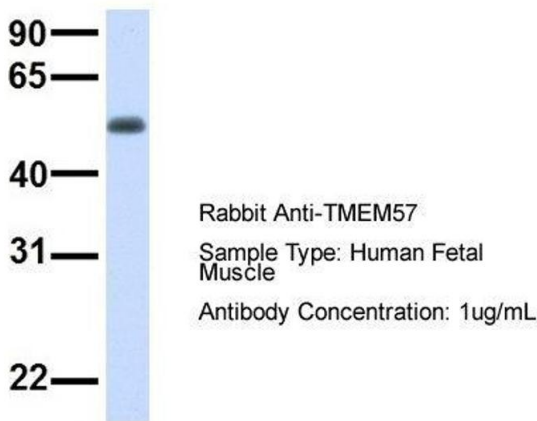
Image 1. Host: Rabbit Target Name: TMEM57 Sample Type: Human Adult Placenta Antibody Dilution: 1.0ug/ml



Western Blotting

Image 2. WB Suggested Anti-TMEM57 Antibody Titration: 0.2-1 ug/ml ELISA Titer: 1:62500 Positive Control: MDA-MB-435S cell lysate

TMEM57



Western Blotting

Image 3. Host: Rabbit Target Name: TMEM57 Sample Type: Human Fetal Muscle Antibody Dilution: 1.0ug/ml

Please check the [product details page](#) for more images. Overall 4 images are available for ABIN2782949.