



[Go to Product page](#)

Datasheet for ABIN2782952

anti-KIRREL antibody (Middle Region)

2 Images

1 Publication

Overview

Quantity:	100 µL
Target:	KIRREL (NEPH1)
Binding Specificity:	Middle Region
Reactivity:	Human, Rat, Mouse, Cow, Dog, Guinea Pig, Horse, Rabbit
Host:	Rabbit
Clonality:	Polyclonal
Conjugate:	This KIRREL antibody is un-conjugated
Application:	Western Blotting (WB)

Product Details

Immunogen:	The immunogen is a synthetic peptide directed towards the middle region of human KIRREL
Sequence:	FLEVGTLERY TVERTNSGSG VLSTLTINNV MEADFQTHYN CTAWNSFGPG
Predicted Reactivity:	Cow: 100%, Dog: 100%, Guinea Pig: 100%, Horse: 100%, Human: 100%, Mouse: 100%, Rabbit: 100%, Rat: 100%
Characteristics:	This is a rabbit polyclonal antibody against KIRREL. It was validated on Western Blot using a cell lysate as a positive control.
Purification:	Affinity Purified

Target Details

Target:	KIRREL (NEPH1)
---------	----------------

Target Details

Alternative Name: KIRREL ([NEPH1 Products](#))

Background: KIRREL (NEPH1) is a member of the nephrin-like protein family, which includes NEPH2 and NEPH3. The cytoplasmic domains of these proteins interact with the C terminus of podocin (NPHS2), and the genes are expressed in kidney podocytes, cells involved in ensuring size- and charge-selective ultrafiltration. NEPH1 is a member of the nephrin-like protein family, which includes NEPH2 (MIM 607761) and NEPH3 (MIM 607762). The cytoplasmic domains of these proteins interact with the C terminus of podocin (NPHS2, MIM 604766), and the genes are expressed in kidney podocytes, cells involved in ensuring size- and charge-selective ultrafiltration (Sellin et al., 2003 [PubMed 12424224]).[supplied by OMIM].

PRIMARYREFSEQ_SPAN PRIMARY_IDENTIFIER PRIMARY_SPAN COMP 1-337 AY302131.1 1-337 338-3211 BC109193.1 1-2874 3212-3609 AK001707.1 1904-2301 3610-3628 BC082969.1 2273-2291

Alias Symbols: FLJ10845, MGC129542, MGC129543, NEPH1

Protein Interaction Partner: UBC, SAV1, LATS1, GRB2, KIRREL, NPHS2, NPHS1, TJP1,

Protein Size: 757

Molecular Weight: 84 kDa

Gene ID: 55243

NCBI Accession: [NM_018240](#), [NP_060710](#)

UniProt: [Q96J84](#)

Pathways: [Regulation of Actin Filament Polymerization](#)

Application Details

Application Notes: Optimal working dilutions should be determined experimentally by the investigator.

Comment: Antigen size: 757 AA

Restrictions: For Research Use only

Handling

Format: Liquid

Concentration: Lot specific

Buffer: Liquid. Purified antibody supplied in 1x PBS buffer with 0.09 % (w/v) sodium azide and 2 % sucrose.

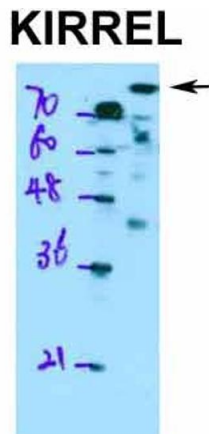
Handling

Preservative:	Sodium azide
Precaution of Use:	This product contains Sodium azide: a POISONOUS AND HAZARDOUS SUBSTANCE which should be handled by trained staff only.
Handling Advice:	Avoid repeated freeze-thaw cycles.
Storage:	-20 °C
Storage Comment:	For short term use, store at 2-8°C up to 1 week. For long term storage, store at -20°C in small aliquots to prevent freeze-thaw cycles.

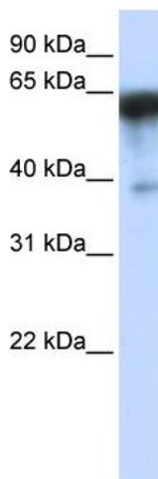
Publications

Product cited in: Podbielski, Rodriguez, Zhu, Worley, Fontaine, Connolly: "Aortoesophageal fistula secondary to reflux esophagitis." in: **Digestive surgery**, Vol. 24, Issue 1, pp. 66-7, (2007) ([PubMed](#)).

Images



See Immunoblot 1 Data and Customer Feedback tab for more information.



Western Blotting

Image 1. WB Suggested Anti-KIRREL Antibody Titration:

0.2-1 ug/ml

ELISA Titer: 1:312500

Positive Control: HepG2 cell lysate

Western Blotting

Image 2. WB Suggested Anti-KIRREL Antibody Titration: 0.2-

1 ug/ml ELISA Titer: 1:312500 Positive Control: HepG2 cell lysate