

Datasheet for ABIN2782953
anti-TMEM30A antibody (Middle Region)



[Go to Product page](#)

5 Images

Overview

Quantity:	100 µL
Target:	TMEM30A
Binding Specificity:	Middle Region
Reactivity:	Human, Mouse, Rat, Dog, Zebrafish (Danio rerio), Guinea Pig, Horse, Cow
Host:	Rabbit
Clonality:	Polyclonal
Conjugate:	This TMEM30A antibody is un-conjugated
Application:	Western Blotting (WB), Immunohistochemistry (IHC)

Product Details

Immunogen:	The immunogen is a synthetic peptide directed towards the middle region of Human TMEM30A
Sequence:	FTLEKSFEGN VFMYYGLSNF YQNHRRYVKS RDDSQLNGDS SALLNPSKEC
Predicted Reactivity:	Cow: 92%, Dog: 100%, Guinea Pig: 100%, Horse: 100%, Human: 100%, Mouse: 100%, Rat: 100%, Zebrafish: 100%
Characteristics:	This is a rabbit polyclonal antibody against TMEM30A. It was validated on Western Blot.
Purification:	Affinity Purified

Target Details

Target:	TMEM30A
Alternative Name:	TMEM30A (TMEM30A Products)

Target Details

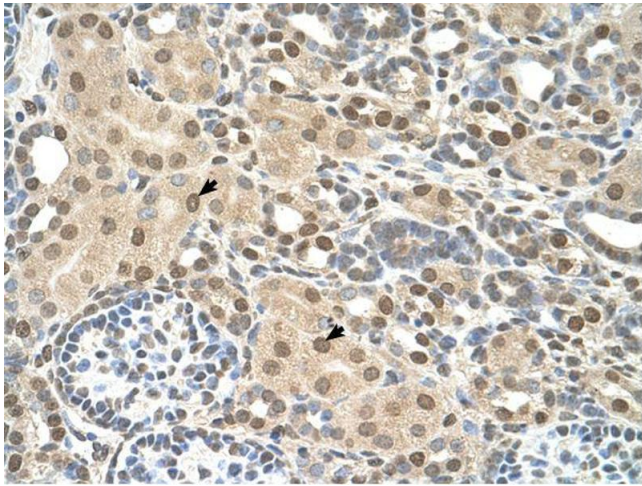
Background:	The function of this protein remains unknown. Alias Symbols: C6orf67, CDC50A, FLJ10856 Protein Interaction Partner: UBC, ATP11C, ATP11A, ATP11B, ATP8A1, ATP8B1, SPP1, ELAVL1, Protein Size: 361
Molecular Weight:	41 kDa
Gene ID:	55754
NCBI Accession:	NM_018247 , NP_060717
UniProt:	Q9NV96

Application Details

Application Notes:	Optimal working dilutions should be determined experimentally by the investigator.
Comment:	Antigen size: 361 AA
Restrictions:	For Research Use only

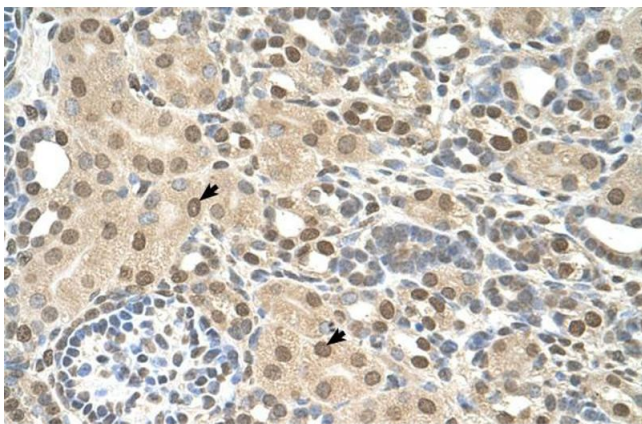
Handling

Format:	Liquid
Concentration:	Lot specific
Buffer:	Liquid. Purified antibody supplied in 1x PBS buffer with 0.09 % (w/v) sodium azide and 2 % sucrose.
Preservative:	Sodium azide
Precaution of Use:	This product contains Sodium azide: a POISONOUS AND HAZARDOUS SUBSTANCE which should be handled by trained staff only.
Handling Advice:	Avoid repeated freeze-thaw cycles.
Storage:	-20 °C
Storage Comment:	For short term use, store at 2-8°C up to 1 week. For long term storage, store at -20°C in small aliquots to prevent freeze-thaw cycles.



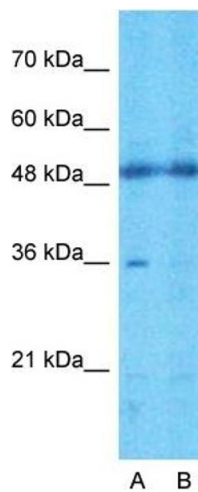
Immunohistochemistry

Image 1.



Immunohistochemistry

Image 2. Rabbit Anti-TMEM30A Antibody Paraffin Embedded Tissue: Human Kidney Cellular Data: Epithelial cells of renal tubule Antibody Concentration: 4.0-8.0 ug/ml Magnification: 400X



Western Blotting

Image 3. Host: Rabbit Target Name: TMEM30A Sample Type: 721_B Lane A: Primary Antibody Lane B: Primary Antibody + Blocking Peptide Primary Antibody Concentration: 1ug/ml Peptide Concentration: 5ug/ml Lysate Quantity: 25ug/lane/lane Gel Concentration: 0.12

Please check the [product details page](#) for more images. Overall 5 images are available for ABIN2782953.