

Datasheet for ABIN2782958
anti-TMEM144 antibody (Middle Region)[Go to Product page](#)

1 Image

Overview

Quantity:	100 µL
Target:	TMEM144
Binding Specificity:	Middle Region
Reactivity:	Human, Rat, Cow, Dog, Horse, Pig, Guinea Pig, Mouse, Rabbit
Host:	Rabbit
Clonality:	Polyclonal
Conjugate:	This TMEM144 antibody is un-conjugated
Application:	Western Blotting (WB)

Product Details

Immunogen:	The immunogen is a synthetic peptide directed towards the middle region of human TMEM144
Sequence:	LSTVHHRIVG CSLAVISGVL YGSTFVPIIY IKDHSCRNDS IYAGASQYDL
Predicted Reactivity:	Cow: 100%, Dog: 100%, Guinea Pig: 79%, Horse: 100%, Human: 100%, Mouse: 86%, Pig: 100%, Rabbit: 93%, Rat: 100%
Characteristics:	This is a rabbit polyclonal antibody against TMEM144. It was validated on Western Blot using a cell lysate as a positive control.
Purification:	Affinity Purified

Target Details

Target:	TMEM144
---------	---------

Target Details

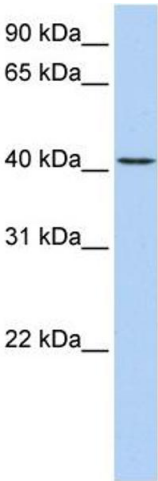
Alternative Name:	TMEM144 (TMEM144 Products)
Background:	<p>TMEM144 belongs to the TMEM144 family. It is a multi-pass membrane protein. The function of the TMEM144 protein remains unknown.</p> <p>Alias Symbols: FLJ11155</p> <p>Protein Size: 345</p>
Molecular Weight:	38 kDa
Gene ID:	55314
NCBI Accession:	NM_018342 , NP_060812
UniProt:	Q7Z5S9

Application Details

Application Notes:	Optimal working dilutions should be determined experimentally by the investigator.
Comment:	Antigen size: 345 AA
Restrictions:	For Research Use only

Handling

Format:	Liquid
Concentration:	Lot specific
Buffer:	Liquid. Purified antibody supplied in 1x PBS buffer with 0.09 % (w/v) sodium azide and 2 % sucrose.
Preservative:	Sodium azide
Precaution of Use:	This product contains Sodium azide: a POISONOUS AND HAZARDOUS SUBSTANCE which should be handled by trained staff only.
Handling Advice:	Avoid repeated freeze-thaw cycles.
Storage:	-20 °C
Storage Comment:	For short term use, store at 2-8°C up to 1 week. For long term storage, store at -20°C in small aliquots to prevent freeze-thaw cycles.



Western Blotting

Image 1. WB Suggested Anti-TMEM144 Antibody Titration:
0.2-1 ug/ml ELISA Titer: 1:312500 Positive Control: Human Lung