



[Go to Product page](#)

Datasheet for ABIN2782966  
**anti-LAPTM4B antibody (Middle Region)**

3 Images

Overview

Quantity:	100 µL
Target:	LAPTM4B
Binding Specificity:	Middle Region
Reactivity:	Human, Rat, Mouse, Dog, Guinea Pig, Horse, Rabbit, Cow
Host:	Rabbit
Clonality:	Polyclonal
Conjugate:	This LAPTM4B antibody is un-conjugated
Application:	Western Blotting (WB), Immunohistochemistry (IHC)

Product Details

Immunogen:	The immunogen is a synthetic peptide directed towards the middle region of human LAPTM4B
Sequence:	YPNSIQEYIR QLPPNFPYRD DVMSVNPTCL VLIILLFISI ILTFKGYLIS
Predicted Reactivity:	Cow: 93%, Dog: 100%, Guinea Pig: 100%, Horse: 100%, Human: 100%, Mouse: 100%, Rabbit: 100%, Rat: 100%
Characteristics:	This is a rabbit polyclonal antibody against LAPTM4B. It was validated on Western Blot using a cell lysate as a positive control.
Purification:	Affinity Purified

Target Details

Target:	LAPTM4B
---------	---------

## Target Details

---

Alternative Name:	LAPTM4B ( <a href="#">LAPTM4B Products</a> )
Background:	<p>LAPTM4B is a multi-pass membrane protein. It belongs to the LAPTM4/LAPTM5 transporter family. LAPTM4b has active role in disease progression of malignant cells and is involved in cell proliferation and multidrug resistance. The genetic polymorphism of LAPTM4B is a potential risk factor for the development of colon cancer and gastric cancer. The research results also indicated that LAPTM4B may be a clinically useful prognostic indicator for ovarian carcinoma and may play a role in human hepatocellular carcinoma.</p> <p>Alias Symbols: LAPTM4beta, LC27</p> <p>Protein Interaction Partner: NAALADL2, TFRC, NEDD4, UBC,</p> <p>Protein Size: 317</p>
Molecular Weight:	35 kDa
Gene ID:	55353
NCBI Accession:	<a href="#">NM_018407</a> , <a href="#">NP_060877</a>

## Application Details

---

Application Notes:	Optimal working dilutions should be determined experimentally by the investigator.
Comment:	Antigen size: 317 AA
Restrictions:	For Research Use only

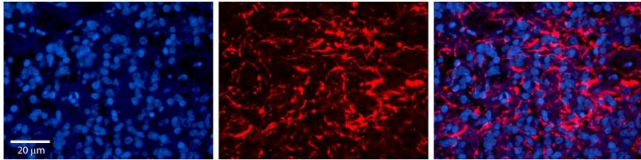
## Handling

---

Format:	Liquid
Concentration:	Lot specific
Buffer:	Liquid. Purified antibody supplied in 1x PBS buffer with 0.09 % (w/v) sodium azide and 2 % sucrose.
Preservative:	Sodium azide
Precaution of Use:	This product contains Sodium azide: a POISONOUS AND HAZARDOUS SUBSTANCE which should be handled by trained staff only.
Handling Advice:	Avoid repeated freeze-thaw cycles.
Storage:	-20 °C
Storage Comment:	For short term use, store at 2-8°C up to 1 week. For long term storage, store at -20°C in small

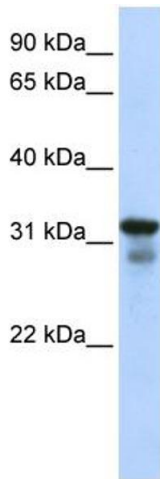
aliquots to prevent freeze-thaw cycles.

Images



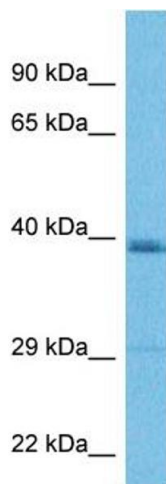
**Immunohistochemistry**

**Image 1.** Rabbit Anti-LAPTM4B Antibody Formalin Fixed Paraffin Embedded Tissue: Human Pineal Tissue Observed Staining: Membrane and cytoplasmic in processes of pinealocytes and interstitial cells Primary Antibody Concentration: 1:100 Other Working Concentrations: 1/600 Secondary Antibody: Donkey anti-Rabbit-Cy3 Secondary Antibody Concentration: 1:200 Magnification: 20X Exposure Time: 0.5 - 2.0 sec



**Western Blotting**

**Image 2.** WB Suggested Anti-LAPTM4B Antibody Titration: 0.2-1 ug/ml ELISA Titer: 1:62500 Positive Control: 293T cell lysate There is BioGPS gene expression data showing that LAPTM4B is expressed in HEK293T



**Western Blotting**

**Image 3.** Host: Rabbit Target Name: LAPTM4B Sample Tissue: Human MDA-MB-435s Whole Cell Antibody Dilution: 1ug/ml