

Datasheet for ABIN2782969
anti-ST6GALNAC1 antibody (C-Term)



[Go to Product page](#)

1 Image

Overview

Quantity:	100 µL
Target:	ST6GALNAC1
Binding Specificity:	C-Term
Reactivity:	Human, Mouse, Rat, Dog, Guinea Pig, Horse, Rabbit, Cow
Host:	Rabbit
Clonality:	Polyclonal
Conjugate:	This ST6GALNAC1 antibody is un-conjugated
Application:	Western Blotting (WB)

Product Details

Sequence:	GALLLLTALH LCDKVSAYGF ITEGHQRFSD HYYDTSWKRL IFYINHDFRL
Predicted Reactivity:	Cow: 100%, Dog: 100%, Guinea Pig: 100%, Horse: 100%, Human: 100%, Mouse: 93%, Rabbit: 100%, Rat: 100%
Characteristics:	This is a rabbit polyclonal antibody against St6galnac1. It was validated on Western Blot.
Purification:	Affinity Purified

Target Details

Target:	ST6GALNAC1
Alternative Name:	St6galnac1 (ST6GALNAC1 Products)
Background:	St6galnac1 transfers CMP-NeuAc with an alpha-2,6-linkage to the GalNAc residues of GalNAc-

Target Details

O-Ser/Thr, Gal-beta-1,3-GalNAc-O-Ser/Thr and NeuAc-alpha-2,3-Gal-beta-1,3-GalNAc-O-Ser/Thr are substrates. Higher activity towards GalNAc-O-Ser/Thr.

Alias Symbols: Siat7a

Protein Size: 526

Molecular Weight: 61 kDa

Gene ID: 20445

NCBI Accession: [NM_011371](#), [NP_035501](#)

UniProt: [Q9QZ39](#)

Application Details

Application Notes: Optimal working dilutions should be determined experimentally by the investigator.

Comment: Antigen size: 526 AA

Restrictions: For Research Use only

Handling

Format: Liquid

Concentration: Lot specific

Buffer: Liquid. Purified antibody supplied in 1x PBS buffer with 0.09 % (w/v) sodium azide and 2 % sucrose.

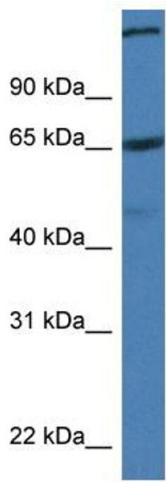
Preservative: Sodium azide

Precaution of Use: This product contains Sodium azide: a POISONOUS AND HAZARDOUS SUBSTANCE which should be handled by trained staff only.

Handling Advice: Avoid repeated freeze-thaw cycles.

Storage: -20 °C

Storage Comment: For short term use, store at 2-8°C up to 1 week. For long term storage, store at -20°C in small aliquots to prevent freeze-thaw cycles.



Rabbit Anti-St6galnac1 Antibody
Catalog Number: ARP47445
Lot Number: QC17349
Lane: Mouse Pancreas Lysate

Antibody Titration: 1.0µg/ml
Gel Concentration: 12%

Western Blotting

Image 1.