



Datasheet for ABIN2782975
anti-KRT23 antibody (Middle Region)



[Go to Product page](#)

2 Images

Overview

Quantity:	100 µL
Target:	KRT23
Binding Specificity:	Middle Region
Reactivity:	Human, Horse, Dog, Guinea Pig
Host:	Rabbit
Clonality:	Polyclonal
Conjugate:	This KRT23 antibody is un-conjugated
Application:	Western Blotting (WB), Immunohistochemistry (IHC)

Product Details

Immunogen:	The immunogen is a synthetic peptide directed towards the middle region of human KRT23
Sequence:	IKTHLEKEIT TYRRLLLEGES EGTREESKSS MKVSATPKIK AITQETINGR
Predicted Reactivity:	Dog: 93%, Guinea Pig: 79%, Horse: 86%, Human: 100%
Characteristics:	This is a rabbit polyclonal antibody against KRT23. It was validated on Western Blot using a cell lysate as a positive control.
Purification:	Affinity Purified

Target Details

Target:	KRT23
Alternative Name:	KRT23 (KRT23 Products)

Target Details

Background: KRT23 is a member of the keratin family. The keratins are intermediate filament proteins responsible for the structural integrity of epithelial cells and are subdivided into cytokeratins and hair keratins. The type I cytokeratins consist of acidic proteins which are arranged in pairs of heterotypic keratin chains. The protein encoded by this gene is a member of the keratin family. The keratins are intermediate filament proteins responsible for the structural integrity of epithelial cells and are subdivided into cytokeratins and hair keratins. The type I cytokeratins consist of acidic proteins which are arranged in pairs of heterotypic keratin chains. The type I cytokeratin genes are clustered in a region of chromosome 17q12-q21.

Alias Symbols: CK23, DKFZP434G032, HAIK1, K23, MGC26158

Protein Interaction Partner: UBC, APC,

Protein Size: 422

Molecular Weight: 48 kDa

Gene ID: 25984

NCBI Accession: [NM_015515](#), [NP_056330](#)

UniProt: [Q9C075](#)

Application Details

Application Notes: Optimal working dilutions should be determined experimentally by the investigator.

Comment: Antigen size: 422 AA

Restrictions: For Research Use only

Handling

Format: Liquid

Concentration: Lot specific

Buffer: Liquid. Purified antibody supplied in 1x PBS buffer with 0.09 % (w/v) sodium azide and 2 % sucrose.

Preservative: Sodium azide

Precaution of Use: This product contains Sodium azide: a POISONOUS AND HAZARDOUS SUBSTANCE which should be handled by trained staff only.

Handling Advice: Avoid repeated freeze-thaw cycles.

Storage: -20 °C

Handling

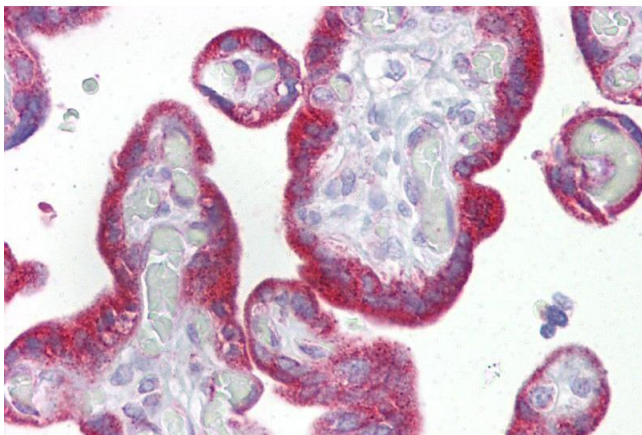
Storage Comment: For short term use, store at 2-8°C up to 1 week. For long term storage, store at -20°C in small aliquots to prevent freeze-thaw cycles.

Images



Western Blotting

Image 1. WB Suggested Anti-KRT23 Antibody Titration: 0.2-1 ug/ml ELISA Titer: 1:62500 Positive Control: 721_B cell lysate



Immunohistochemistry

Image 2. Immunohistochemistry with Placenta tissue at an antibody concentration of 5µg/ml using anti-KRT23 antibody (ARP47466_P050)