

Datasheet for ABIN2782991  
**anti-ETV3L antibody (C-Term)**



[Go to Product page](#)

1 Image

## Overview

Quantity:	100 µL
Target:	ETV3L
Binding Specificity:	C-Term
Reactivity:	Human, Rabbit, Dog, Pig
Host:	Rabbit
Clonality:	Polyclonal
Conjugate:	This ETV3L antibody is un-conjugated
Application:	Western Blotting (WB)

## Product Details

Immunogen:	The immunogen is a synthetic peptide directed towards the C terminal region of human ETV3L
Sequence:	LPPLPSEQQL PGAFKPDILL PGPRSLPGAW HFPGLPLLAG LGQGAGERLW
Predicted Reactivity:	Dog: 92%, Human: 100%, Pig: 93%, Rabbit: 79%
Characteristics:	This is a rabbit polyclonal antibody against ETV3L. It was validated on Western Blot using a cell lysate as a positive control.
Purification:	Affinity Purified

## Target Details

Target:	ETV3L
Alternative Name:	ETV3L ( <a href="#">ETV3L Products</a> )

### Target Details

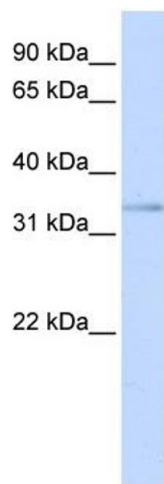
Background:	ETV3L is a transcriptional regulator, which belongs to the ETS family and contains 1 ETS DNA-binding domain. Alias Symbols: FLJ16478 Protein Size: 361
Molecular Weight:	40 kDa
Gene ID:	440695
NCBI Accession:	<a href="#">NM_001004341</a> , <a href="#">NP_001004341</a>
UniProt:	<a href="#">Q6ZN32</a>

### Application Details

Application Notes:	Optimal working dilutions should be determined experimentally by the investigator.
Comment:	Antigen size: 361 AA
Restrictions:	For Research Use only

### Handling

Format:	Liquid
Concentration:	Lot specific
Buffer:	Liquid. Purified antibody supplied in 1x PBS buffer with 0.09 % (w/v) sodium azide and 2 % sucrose.
Preservative:	Sodium azide
Precaution of Use:	This product contains Sodium azide: a POISONOUS AND HAZARDOUS SUBSTANCE which should be handled by trained staff only.
Handling Advice:	Avoid repeated freeze-thaw cycles.
Storage:	-20 °C
Storage Comment:	For short term use, store at 2-8°C up to 1 week. For long term storage, store at -20°C in small aliquots to prevent freeze-thaw cycles.



Western Blotting

**Image 1.** WB Suggested Anti-ETV3L Antibody Titration: 0.2-1 ug/ml ELISA Titer: 1:62500 Positive Control: Jurkat cell lysate