



Datasheet for ABIN2782996
anti-LBX2 antibody (Middle Region)



[Go to Product page](#)

1 Image

Overview

Quantity:	100 µL
Target:	LBX2
Binding Specificity:	Middle Region
Reactivity:	Human, Rat, Mouse, Horse
Host:	Rabbit
Clonality:	Polyclonal
Conjugate:	This LBX2 antibody is un-conjugated
Application:	Western Blotting (WB)

Product Details

Immunogen:	The immunogen is a synthetic peptide directed towards the middle region of human LBX2
Sequence:	MRADVASLRA LSPEVLCSLA LPEGAPDPGL CLGPAGPDSR PHLSDEEIQV
Predicted Reactivity:	Horse: 91%, Human: 100%, Mouse: 79%, Rat: 79%
Characteristics:	This is a rabbit polyclonal antibody against LBX2. It was validated on Western Blot using a cell lysate as a positive control.
Purification:	Affinity Purified

Target Details

Target:	LBX2
Alternative Name:	LBX2 (LBX2 Products)

Target Details

Background: LBX2 is a putative transcription factor.
Alias Symbols: LP3727
Protein Size: 194

Molecular Weight: 21 kDa

Gene ID: 85474

NCBI Accession: [NM_001009812](#), [NP_001009812](#)

Application Details

Application Notes: Optimal working dilutions should be determined experimentally by the investigator.

Comment: Antigen size: 194 AA

Restrictions: For Research Use only

Handling

Format: Liquid

Concentration: Lot specific

Buffer: Liquid. Purified antibody supplied in 1x PBS buffer with 0.09 % (w/v) sodium azide and 2 % sucrose.

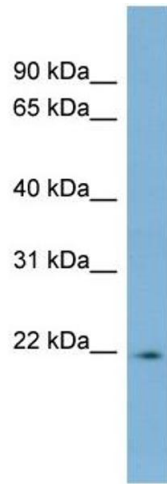
Preservative: Sodium azide

Precaution of Use: This product contains Sodium azide: a POISONOUS AND HAZARDOUS SUBSTANCE which should be handled by trained staff only.

Handling Advice: Avoid repeated freeze-thaw cycles.

Storage: -20 °C

Storage Comment: For short term use, store at 2-8°C up to 1 week. For long term storage, store at -20°C in small aliquots to prevent freeze-thaw cycles.



Western Blotting

Image 1. WB Suggested Anti-LBX2 Antibody Titration: 0.2-1 ug/ml ELISA Titer: 1:312500 Positive Control: Human Small Intestine