



[Go to Product page](#)

Datasheet for ABIN2783000
anti-LOC685849 antibody (N-Term)

1 Image

Overview

Quantity:	100 µL
Target:	LOC685849
Binding Specificity:	N-Term
Reactivity:	Cow, Guinea Pig, Horse, Human, Mouse, Rabbit, Rat
Host:	Rabbit
Clonality:	Polyclonal
Conjugate:	This LOC685849 antibody is un-conjugated
Application:	Western Blotting (WB)

Product Details

Immunogen:	The immunogen is a synthetic peptide directed towards the N-terminal region of Rat LOC685849
Sequence:	PISIQFLRAQ YEGLKRQRT QAHLMVFPKE GIMPAPAELM TSTVWINKER
Predicted Reactivity:	Cow: 79%, Guinea Pig: 86%, Horse: 86%, Human: 100%, Mouse: 86%, Rabbit: 86%, Rat: 100%
Characteristics:	This is a rabbit polyclonal antibody against LOC685849. It was validated on Western Blot.
Purification:	Affinity Purified

Target Details

Target:	LOC685849
Alternative Name:	LOC685849 (LOC685849 Products)

Target Details

Background: The function of this protein remains unknown.
Alias Symbols: -
Protein Size: 234

Molecular Weight: 25 kDa

Gene ID: 685849

NCBI Accession: [XM_001065498](#), [XP_001065498](#)

UniProt: [D4A4N9](#)

Application Details

Application Notes: Optimal working dilutions should be determined experimentally by the investigator.

Comment: Antigen size: 234 AA

Restrictions: For Research Use only

Handling

Format: Liquid

Concentration: Lot specific

Buffer: Liquid. Purified antibody supplied in 1x PBS buffer with 0.09 % (w/v) sodium azide and 2 % sucrose.

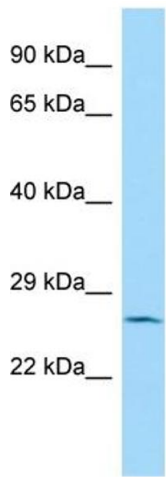
Preservative: Sodium azide

Precaution of Use: This product contains Sodium azide: a POISONOUS AND HAZARDOUS SUBSTANCE which should be handled by trained staff only.

Handling Advice: Avoid repeated freeze-thaw cycles.

Storage: -20 °C

Storage Comment: For short term use, store at 2-8°C up to 1 week. For long term storage, store at -20°C in small aliquots to prevent freeze-thaw cycles.



Host: Rabbit
Target Name: LOC685849
Sample Tissue: Rat Spleen Lysate
Antibody Dilution: 1.0µg/ml

Western Blotting

Image 1. WB Suggested Anti-LOC685849 Antibody
Titration: 1.0 ug/ml Positive Control: Rat Spleen